

## DISTINGUISHED ALUMNI

**M**any Billiken soccer alumni have distinguished themselves in the professional world following their graduation from the University. The following are just a few of the impressive careers fashioned by former Billikens:

**Steve Bee ('91)** – Graduated with a finance degree and is a Compliance attorney for A.G. Edwards.

**Gene Block ('59)** – Retired Vice President/Legislative Services for Calmat Division of Vulcan Industries in San Francisco.

**Don Brennan ('66)** – Dean of SLU Graduate School.

**Joe Clarke ('76)** – After earning his law degree while playing professionally, he coached the Bills for 14 years and is now head coach at Washington (Mo.) U.

**Dan Counce ('74)** – Is General Manager of the MLS Colorado Rapids. His career includes stints as GM with the Baltimore Blast and St. Louis Storm.

**Daryl Doran (1981)** – Head Coach and General Manager of the St. Louis Steamers Indoor Soccer Team.

**John Eilerman ('73)** – Executive Vice President for C & R Mechanical Co.

**Dan Flynn ('78)** – Secretary General of the U.S. Soccer Federation.

**Steve Frank ('69)** – Executive Vice President of Plancorp Inc.

**Jack Galmiche ('69)** – Owns Broadcast Interactive Group in Oregon.



**Jim Kavanaugh**



**Bill Vieth Sr.**

**Sal Grasso ('65)** – Special agent for Social Security Administration.

**Bruce Hudson ('75)** – Director of International Sports Marketing for Anheuser-Busch Cos.

**Jim Kavanaugh ('86)** – President and CEO of telcobuy.com.

**Johnny Johnson ('89)** – Executive Assistant/Vice President Marketing at Anheuser-Busch Cos., Inc.

**Ty Keough ('79)** – Former Washington (Mo.) University head soccer coach is a soccer analyst for ESPN and ABC-TV.

**Joe Koenig ('86)** – President and COO of World Wide Technologies.

**Steve Kuntz ('92)** – Graduated with a degree in finance. He is an inside sales rep for World Wide Technologies.

**Pat Leahy ('73)** – Set scoring records for the NFL New York Jets and is an independent businessman in St. Louis.

**Brian McBride ('94)** – Graduated with a degree in education. He is playing with the MLS Columbus Crew and for the U.S. National Team. He scored the lone U.S. goal in the '98 World Cup in France.

## DISTINGUISHED ALUMNI

**Pat McBride ('66)** – Head coach at St. Louis Community College at Forest Park.

**Bill McDermott ('70)** – Owns his own award-winning graphics design firm and is a soccer analyst for ESPN and ABC-TV.

**Matt McKeon ('95)** – Graduated with a degree in criminal justice and is playing with the defending MLS champion Kansas City Wizards. He has made U.S. National Team appearances and played on the U.S. Olympic Team in '96.

**Dan Merlo ('92)** – Graduated with a degree in political science. He is a Sales and Leasing Associate in commercial real estate for the Sansone Group.

**Ed Neusel ('70)** – Pediatric dentist.

**Mike Pelizzaro ('88)** – Commerce Bank branch manager.

**Tom Pelizzaro ('75)** – President of Adventure Associates.

**Steve Rick ('66)** – Commerce Bank President.

**Jim Sanders ('78)** – Counsel for Lewis, Rice and Fingerish.



Kansas City Wizards All-Star and former Billiken Matt McKeon trains with SLU players at the Billikens' practice field

**Mark Santel ('91)** – Graduated with a degree in business and is playing with the MLS Kansas City Wizards.

**Mike Shanahan Sr. ('60)** – Chairman and CEO of Engineered Support Systems and former Chairman of the University board of trustees.

**Dave Sirinek ('64)** – Director of Court Services for Clay County Family Court.

**Mike Sorber ('93)** – Graduated with a degree in business and retired from the MLS Chicago Fire to join the Billikens as an assistant coach. He played for the U.S. National Team in the '94 World Cup and played internationally in Mexico.

**Tom Torretti ('73)** – Peavey Barge Lines.

**Dr. Steve Vierling ('67)** – President of Premier Orthopedics Inc.

**Bill Vieth Sr. ('63)** – Chairman of the Board of Integra Bank.

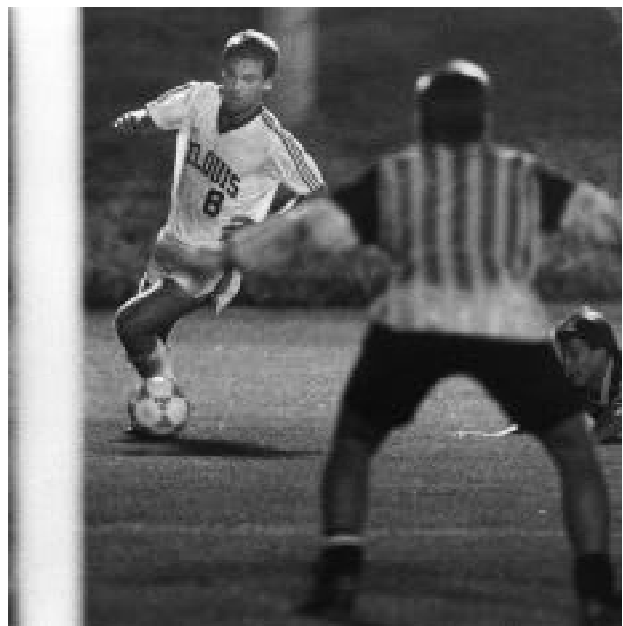


Joe Koenig

**Wally Werner ('67)** – Manager of Business Operations for Boeing Co.

**Jay Zaber ('93)** – Graduated with a degree in physical therapy. He is a physical therapist for South St. Louis Rehabilitation Network and is a volunteer goalkeeper coach for the Billikens women's team.

**Dr. Chuck Zorumski ('74)** – Chairman of the Department of Psychiatry at Washington (Mo.) University.



All-American Johnny Johnson

## MLS CONNECTION

**S**aint Louis University soccer is quite rich in tradition. It makes sense that Billiken soccer plays a part in this country's professional outdoor soccer league, Major League Soccer.



**Brian McBride**

Billiken alums Brian McBride, Matt McKeon, Mike Sorber and Mark Santel all have played major roles for their MLS teams.

All four players have performed for the U.S. National Team. A two-time All-American for the Bills, McBride scored the lone U.S. goal in the '98 World Cup in France and is still a member of the current team under coach Bruce Arena.

Sorber played a starring role in the United States' surprise showing in the '94



**Mike Sorber**



**Bill McDermott**

World Cup hosted by the United States. Sorber gained extensive professional experience while playing internationally in Mexico. It benefitted him throughout his three-team MLS tenure.

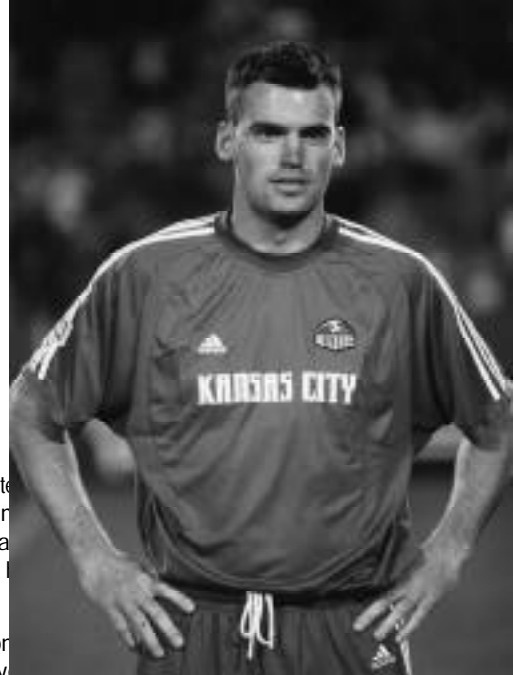
McKeon was called up to the National Team in the summer of 1999 and played well in the Confederation's Cup in Mexico. Living up to his collegiate reputation when he was named national Player of the Year



**Mark Santel**

in 1995, McKeon has been a rugged performer in MLS for both Kansas City and Colorado.

A three-time Billiken All-American, Santel has made numerous appearances on the U.S. team roster. He was traded from Dallas to Kansas City prior to the 2001 season. He had been a mainstay on the Burn roster since the team's inception and played virtually every position except keeper.



**Matt McKeon**

Billiken alums also play a role off the field. Dan Counce, the 1973 Hermann Award winner as national Player of the Year, is the general manager of the Colorado franchise. Ty Keough, a two-time first-team All-American for the Bills, and Bill McDermott, a midfielder for the Bills' 1967 and '69 national champions, are analysts for ESPN and ABC-TV soccer telecasts.

Another former Billiken heavily involved in the U.S. soccer scene is Dan Flynn. The Billikens' MVP in 1977, Flynn is the secretary general of U.S. Soccer. He was the site coordinator for the World Cup games played in Chicago in '94.



**Ty Keough**

# NATIONAL PLAYER OF THE YEAR



**O**n Tuesday, Jan. 9, 1996, Matt McKeon became the first Billiken and first native St. Louisan to receive the Missouri Athletic Club Sports Foundation's college soccer Player of the Year award.

McKeon out-distanced Virginia's Mike Fisher and Damian Silvera in the tightest voting in the 10-year history of the award. McKeon collected 66 first-place ballots and 322 points, while Fisher finished with 62 first-place votes and 308 points. Silvera totaled 57 first-place votes and 281 points.

A three-time All-American for the Billikens, McKeon earned Conference USA Player of the Year honors as he collected 17 goals and a single-season school record 20 assists for 54 points in his senior season. He finished as the Billikens' all-time leader in assists with 46 and fourth on the all-time scoring chart with 140 points.

It was McKeon's third national player of the year award of his career. He was *Parade Magazine's* and *Gatorade's* national high school player of the year in 1991 after a stellar career at DeSmet High School.

Dan Counce was the last Billiken to be named national Player of the Year when he earned the Hermann Trophy in 1973.

## Hermann Trophy

1967 – Don Markus	Long Island
1968 – Manual Hernandez	San Jose State
1969 – Al Trost	Saint Louis
1970 – Al Trost	Saint Louis
1971 – Mike Seerey	Saint Louis
1972 – Mike Seerey	Saint Louis
1973 – Dan Counce	Saint Louis
1974 – Farrukh Quraishi	Oneonta State
1975 – Steve Raibovsky	Brown
1976 – Glenn Myernick	Hartwick
1977 – Billy Gazonas	Hartwick
1978 – Angelo DiBernardo	Indiana
1979 – Jim Stamatis	Penn State
1980 – Joe Morrone Jr.	Connecticut
1981 – Armando Betancourt	Indiana
1982 – Joe Ulrich	Duke
1983 – Mike Jeffries	Duke
1984 – Amr Aly	Columbia
1985 – Tom Kain	Duke
1986 – John Kerr	Duke
1987 – Bruce Murray	Clemson
1988 – Ken Snow	Indiana
1989 – Tony Meola	Virginia
1990 – Ken Snow	Indiana
1991 – Alexi Lalas	Rutgers
1992 – Brad Friedel	UCLA
1993 – Claudio Reyna	Virginia
1994 – Brian Maisonneuve	Indiana
1995 – Mike Fisher	Virginia
1996 – Mike Fisher	Virginia
1997 – Johnny Torres	Creighton
1998 – Wojtek Krakowiak	Clemson
1999 – Ali Curtis	Duke
2000 – Chris Gbandi	Connecticut

## Missouri Athletic Club Award

1986 – John Kerr	Duke
1987 – John Harkes	Virginia
1988 – Ken Snow	Indiana
1989 – Tony Meola	Virginia
1990 – Ken Snow	Indiana
1991 – Alexi Lalas	Rutgers
1992 – Claudio Reyna	Virginia
1993 – Claudio Reyna	Virginia
1994 – Todd Yeagley	Indiana
1995 – <b>Matt McKeon</b>	<b>Saint Louis</b>
1996 – Mike Fisher	Virginia
1997 – Johnny Torres	Creighton
1998 – Jay Heaps	Duke
1999 – Sasha Victorine	UCLA
2000 – Ali Curtis	Duke

# NCAA TOURNAMENT SUMMARY

## NATIONAL 1959 CHAMPIONS

St. Louis, Mo.  
 Saint Louis 4, San Francisco 0 (QF)  
 Storrs, Conn.  
 Saint Louis 6, CC-New York 2 (SF)  
 Saint Louis 5, Bridgeport 2 (F)

## NATIONAL 1960 CHAMPIONS

St. Louis, Mo.  
 Saint Louis 2, California 0 (QF)  
 Brooklyn, N.Y.  
 Saint Louis 2, West Chester 1 (SF)  
 Saint Louis 3, Maryland 2 (F)

## 1961

San Francisco, Calif.  
 Saint Louis 1, San Francisco 0 (QF)  
 St. Louis, Mo.  
 Saint Louis 6, Rutgers 1 (SF)  
 West Chester 2, Saint Louis 0 (F)

## NATIONAL 1962 CHAMPIONS

St. Louis, Mo.  
 Saint Louis 9, Stanford 3 (QF)  
 Saint Louis 2, Michigan St. 0 (SF)  
 Saint Louis 4, Maryland 3 (F)

## NATIONAL 1963 CHAMPIONS

St. Louis, Mo.  
 Saint Louis 3, San Francisco 2 (QF)  
 New Brunswick, N.J.  
 Saint Louis 7, Maryland 3 (SF)  
 Saint Louis 3, Navy 0 (F)

## 1964

St. Louis, Mo.  
 Saint Louis 3, Indiana 2 (FR)  
 Saint Louis 5, San Jose St. 0 (QF)  
 Providence, R.I.  
 Navy 2, Saint Louis 1 (SF)

## NATIONAL 1965 CHAMPIONS

St. Louis, Mo.  
 Saint Louis 2, Ohio 1 (FR)  
 San Francisco, Calif.  
 Saint Louis 5, San Francisco 2 (QF)  
 St. Louis, Mo.  
 Saint Louis 3, Navy 1 (SF)  
 Saint Louis 1, Michigan St. 0 (F)

## 1966

Colorado Springs, Colo.  
 Saint Louis 5, Colorado Coll. 1 (FR)  
 San Francisco, Calif.  
 San Francisco 2, Saint Louis 1 (QF)

## NATIONAL 1967 CHAMPIONS\*

St. Louis, Mo.  
 Saint Louis 6, Colorado Coll. 0 (FR)  
 San Jose, Calif.  
 Saint Louis 4, San Jose St. 3 (QF)  
 Saint Louis 1, Navy 0 (SF)  
 Saint Louis 0, Michigan St. 0 (F)  
 \*Co-champions were declared when the game was halted because of inclement weather

## 1968

St. Louis, Mo.  
 Saint Louis 3, West Virginia 2 (FR)  
 College Park, Md.  
 Maryland 3, Saint Louis 1 (QF)

## NATIONAL 1969 CHAMPIONS

St. Louis, Mo.  
 Saint Louis 4, SIU Edwardsville 0 (FR)  
 Akron, Ohio  
 Saint Louis 2, Cleveland St. 1 (QF)  
 Edwardsville, Ill.  
 Saint Louis 2, Harvard 1 (SF)  
 Saint Louis 4, San Francisco 0 (F)

## NATIONAL 1970 CHAMPIONS

Edwardsville, Ill.  
 Saint Louis 7, Akron 0 (FR)  
 Saint Louis 2, SIU Edwardsville 1 (QF)  
 Saint Louis 1, Hartwick 0 (SF)  
 Saint Louis 1, UCLA 0 (F)

## 1971

Edwardsville, Ill.  
 Saint Louis 4, Ohio 0 (FR)  
 Saint Louis 3, SIU Edwardsville 0 (QF)  
 Miami, Fla.  
 Saint Louis 3, San Francisco 2 (SF)  
 Howard 3, Saint Louis 1 (F)  
 Howard vacated the title when the NCAA ruled that ineligible players participated

## NATIONAL 1972 CHAMPIONS

St. Louis, Mo.  
 Saint Louis 2, Bowling Green 0 (FR)  
 Athens, Ohio  
 Saint Louis 3, Ohio 1 (QF)  
 Miami, Fla.  
 Saint Louis 2, Howard 1 (SF)  
 Saint Louis 4, UCLA 2 (F)

## NATIONAL 1973 CHAMPIONS

St. Louis, Mo.  
 Saint Louis 6, Bowling Green 0 (FR)  
 Saint Louis 3, SIU Edwardsville 0 (QF)  
 Miami, Fla.  
 Saint Louis 3, Brown 1 (SF)  
 Saint Louis 2, UCLA (ot) (F)

## 1974

St. Louis, Mo.  
 Saint Louis 6, Cleveland St. 0 (FR)  
 Edwardsville, Ill.  
 Saint Louis 2, SIU Edwardsville 1 (ot)(QF)  
 St. Louis, Mo.  
 Saint Louis 3, UCLA 2 (ot) (SF)  
 Howard 2, Saint Louis 1 (ot) (F)

## 1975

Edwardsville, Ill.  
 Saint Louis 2, Akron 1 (FR)  
 SIU Edwardsville 2, Saint Louis 1 (QF)

## 1976

Edwardsville, Ill.  
 SIU Edwardsville 2, Saint Louis 1 (FR)

## 1977

Cleveland, Ohio  
 Cleveland St. 2, Saint Louis 0 (FR)

## 1978

St. Louis, Mo.  
 SIU Edwardsville 3, Saint Louis 0 (FR)

## 1979

Edwardsville, Ill.  
 SIU Edwardsville 2, Saint Louis 1 (ot) (FR)

## 1980

St. Louis, Mo.  
 Saint Louis 3, Southern Methodist 1 (FR)  
 San Francisco 3, Saint Louis 2 (QF)

## 1981

Charleston, Ill.  
 Eastern Illinois 1, Saint Louis 0 (FR)

## 1983

St. Louis, Mo.  
 Saint Louis 2, Southern Methodist 1 (FR)  
 Charleston, Ill.  
 Saint Louis 2, Eastern Illinois 1 (RC)  
 Bloomington, Ind.  
 Indiana 4, Saint Louis 2 (QF)

## 1984

St. Louis, Mo.  
 Saint Louis 5, Southern Methodist 3 (RC)  
 Bloomington, Ind.  
 Indiana 4, Saint Louis 2 (QF)

## 1986

St. Louis, Mo.  
 Saint Louis 2, California 0 (FR)  
 Dallas, Texas  
 Southern Methodist 3, Saint Louis 1 (RC)

# NCAA TOURNAMENT SUMMARY

## 1987

St. Louis, Mo.  
San Diego St. 2, Saint Louis 1 (FR)

## 1988

St. Louis, Mo.  
Southern Methodist 2, Saint Louis 1 (ot) (FR)

## 1989

St. Louis, Mo.  
Fresno St. 2, Saint Louis 0 (FR)

## 1990

St. Louis, Mo.  
Saint Louis 1, George Mason 0 (FR)  
Bloomington, Ind.  
Indiana 2, Saint Louis 1 (RC)

## 1991

St. Louis, Mo.  
Saint Louis 4, North Carolina 0 (SR)  
Saint Louis 3, North Carolina St. 0 (QF)  
Tampa, Fla.  
Virginia 3, Saint Louis 2 (ot) (SF)

## 1992

St. Louis, Mo.  
Saint Louis 2, Bowling Green 1 (FR)  
Durham, N.C.  
Duke 4, Saint Louis 3 (SR)

## 1993

Portland, Ore.  
Saint Louis 0, Portland 0 (SLU 3-2 on PKs) (FR)  
San Francisco, Calif.  
San Francisco 2, Saint Louis 1 (FR)

## 1994

St. Louis, Mo.  
Creighton 2, Saint Louis 1 (FR)

## 1995

Dallas, Texas  
Southern Methodist 4, Saint Louis 1 (ot)(FR)

## 1997

St. Louis, Mo.  
Saint Louis 2, Southwest Mo. St. 0 (FR)  
Saint Louis 1, Creighton 0 (SR)  
Dallas, Texas  
Saint Louis 0, Southern Methodist 0 (ot) (SLU advances on PKs 5-3) (QF)  
Richmond, Va.  
Virginia 3, Saint Louis 1 (SF)

## 1998

St. Louis, Mo.  
Creighton 4, Saint Louis 1 (ot) (FR)

## 1999

St. Louis, Mo.  
Saint Louis 3, Illinois-Chicago 2 (FR)  
UCLA 2, Saint Louis 0 (SR)

## 2000

St. Louis, Mo.  
Saint Louis 0, Kentucky 0 (4ot) (FR)  
UK advances on PKs 4-2

## NCAA Facts

NCAA Championships Won: 10  
NCAA Title Game Appearances: 13  
NCAA Final Four Appearances: 16  
Overall NCAA Record: W-58, L-28, T-4

## Key

FR – First Round  
SR – Second Round  
RC – Regional Championship  
QF – Quarterfinal  
SF – Semifinal  
F - Final



Marty Tappel and Brad Davis celebrate another Billiken goal.

The Billiken Club is in its 11th year of operation and has grown to more than 1,500 members. The annual gift program for athletics has generated more than 5,000 gifts during that time.

The Billiken Club provides attractive benefits to its membership including a newsletter to keep fans up to date on the inside story of Billiken athletics and invitations to many exciting events.

Members can earn points in the ticket system toward a priority list in purchasing



NCAA basketball tickets (when the Billikens participate) and Conference USA postseason tournament tickets. Members receive a luggage tag, scarf or sweater in school colors displaying the Saint Louis University logo and can be eligible for other exciting benefits.

Billiken Club memberships begin at only \$100. A portion of the membership is tax deductible. For information about The Billiken Club, call the department of athletics at (314) 977-8180.

## THE BRONZE BOOT

The annual Bronze Boot match between regional rivals Saint Louis University and Southern Illinois University at Edwardsville traditionally represented some of the most exciting soccer in St. Louis.

The Billikens continued their domination of the series by blanking the Cougars 1-0 in the 1998 match at the Anheuser-Busch Conference & Sports Centre. Freshman Marty Tappel scored in the 96th minute to back the shutout goalkeeping of Paul Nagy and John Politis. Senior marking back Ken Costello led an air-tight Billiken defense.

In 2000, the match was to be played as a spring game in April, but the Billikens had to cancel because of injury problems. The match was played as an August preseason game for the previous two years after a one-year hiatus in 1996. The last regular-season Bronze Boot match was played on Friday, Sept. 8, 1995.

SIUE moved to NCAA Division II status in 1996 and joined a new league, the Great Lakes Valley Conference. NCAA scheduling regulations brought an end to the regular-season competition.

Though Saint Louis leads the series and has won the last 15 contests, the game had special appeal for the local crowds as well as the local players on each squad.

"This has always been a regional rivalry with wide-spread interest around the metro area," noted Doug Woolard, Billikens' director of athletics. "We will always look at ways to play the match in the preseason or spring season, if possible."

In the past, the Bills also had challenged NCAA Division II foe Missouri-St. Louis in the St. Louis Cup. However, NCAA scheduling requirements caused the suspension of that series after 1990.

### BRONZE BOOT Saint Louis Leads 21-5-1

1971	SLU 2, SIUE 1
1972	SLU 1, SIUE 1
1973	SLU 1, SIUE 0
1974	SIUE 1, SLU 0
1975	SIUE 2, SLU 1
1976	SLU 1, SIUE 0
1977	SIUE 3, SLU 2
1978	SLU 1, SIUE 0
1979	SIUE 2, SLU 0
1980	SLU 5, SIUE 1
1981	SLU 2, SIUE 1
1982	SIUE 2, SLU 0
1983	SLU 3, SIUE 1
1984	SLU 1, SIUE 0
1985	SLU 4, SIUE 1
1986	SLU 1, SIUE 0
1987	SLU 2, SIUE 0
1988	SLU 5, SIUE 0
1989	SLU 3, SIUE 1 OT
1990	SLU 3, SIUE 2
1991	SLU 3, SIUE 2
1992	SLU 1, SIUE 0 OT
1993	SLU 3, SIUE 0
1994	SLU 4, SIUE 1
1995	SLU 4, SIUE 0
1997	SLU 5, SIUE 1
1998	SLU 1, SIUE 0 OT

### ST. LOUIS CUP Saint Louis Leads 16-1-0

1974	SLU 2, UMSL 1
1975	UMSL 4, SLU 2
1976	SLU 1, UMSL 0
1977	SLU 1, UMSL 0
1978	SLU 2, UMSL 1
1979	SLU 3, UMSL 0
1980	SLU 3, UMSL 0
1981	SLU 3, UMSL 1
1982	SLU 3, UMSL 0
1983	SLU 3, UMSL 1
1984	SLU 2, UMSL 1
1985	SLU 4, UMSL 2
1986	SLU 2, UMSL 0
1987	SLU 2, UMSL 1
1988	SLU 1, UMSL 0
1989	SLU 3, UMSL 0
1990	SLU 1, UMSL 0



1998 MVP Ken Costello

### BRONZE BOOT MOST VALUABLE PLAYER

1978	Larry Hulcer-SLU	1985	Steve Hunsicker-SLU	1992	Scott McDoniel-SLU
1979	Ed Gettemeier-SIUE	1986	Steve Fuchs-SLU	1993	Brian McBride-SLU
1980	John Hayes-SLU	1987	Dan Walters-SLU	1994	Matt McKeon-SLU
1981	Bill McKeon-SLU	1988	Dave Toural-SLU	1995	Matt McKeon-SLU, Tanner Rupp-SLU
1982	Dan Molloy-SIUE	1989	John Johnson-SLU	1997	Jeff DiMaria-SLU
1983	Tom Hayes-SLU	1990	Brian McBride-SLU	1998	Ken Costello-SLU
1984	Tom Hayes-SLU	1991	Shane Battelle-SLU		

# CAREER RECORDS

## Career Scoring

Player	Total Points		
	G	A	Pts
1. Brian McBride ('90-93)	72	40	184
2. Carl Gentile ('63-65)	67	26	160
3. Gerry Balassi ('60-62)	52	39	143
4. Matt McKeon ('92-95)	47	46	140
5. Mike Seerey ('69-72)	57	19	133
6. Pat McBride ('63-65)	46	38	130
7. Dan Counce ('70-73)	45	22	112
8. John Hayes ('78-81)	48	11	107
9. Bob Trigg ('60-62)	40	24	104
10. Dan Walters ('84-87)	41	19	101
11. Jack Kinealy ('64-66)	46	7	99
12. Don Huber ('75-78)	34	28	96
13. Steve Sullivan ('77-80)	43	9	95
14. Tom Hayes ('82-85)	35	13	83
15. Tom McDonnell ('60-63)	24	28	76
16. Denny Hadican ('70-73)	23	27	73
17. Don Range ('59-60)	27	18	72
18. Tim Logush ('71-74)	24	22	70
19. Dave Toural ('88-89)	29	8	66
Tom Malle ('76-79)	22	22	66

### Total Goals

1. Brian McBride ('90-93)	72
2. Carl Gentile ('63-65)	67
3. Mike Seerey ('69-72)	57
4. Gerry Balassi ('60-62)	52
5. John Hayes ('78-81)	48
6. Matt McKeon ('92-95)	47
7. Pat McBride ('63-65)	46
Jack Kinealy ('64-66)	46
9. Dan Counce ('70-73)	45
10. Steve Sullivan ('77-80)	43

### Total Assists

1. Matt McKeon ('92-95)	46
2. Brian McBride ('90-93)	40
3. Gerry Balassi ('60-62)	39
4. Pat McBride ('63-65)	38
Don Huber ('75-78)	38
6. Mike Sorber ('89-92)	29
7. Tom McDonnell ('60-63)	28
8. Terry Knox ('62-64)	27
Denny Hadican ('70-73)	27
10. Carl Gentile ('63-65)	26
11. Steve Kickham ('86-89)	24
12. Bob Trigg ('60-62)	24
13. John Johnson ('88-89)	22
Dan Counce ('70-73)	22
Tim Logush ('71-74)	22
Tom Malle ('76-79)	22
Bob Malone ('59-61)	22

## Career Goalkeeper

Player	Total Wins (since '84)		
	G	GA	GAA
1. Kevin Johnston (1987-90)	52		
2. Casey Klipfel (1994-97)	40		
3. Paul Nagy (1997-00)	30		
4. Steve Fuchs (1984-86)	25		

Player	Goals Against Average (since '74)		
	G	GA	GAA
1. Rob Vallero ('74-76)	53	39	0.74
2. Jay Zaber ('89-92)	35	23	0.77
3. Dale Smith ('79-80)	26	22	0.80
4. Kevin Johnston ('87-90)	77	70	0.90
5. Jim Tietjens ('78-79)	35	37	1.03

Minimum 25 matches

Player	Total Saves	
	G	GA
1. Pat Baker (1981-84)	320	
2. Steve Fuchs (1983-86)	292	
3. Kevin Johnston (1987-90)	280	
4. Rob Vallero (1974-76)	253	
5. Casey Klipfel (1994-97)	252	

## Career Coaches

Coach	Won-Lost-Tied (Chronological)	
	W-L-T	W-L-T
Bob Guelker ('59-66)	95-10-5	
Harry Keough ('67-82)	213-50-22	
Joe Clarke ('83-96)	205-74-30	
Bob Warming ('97-00)	60-17-10	

Coach	Winning Percentage	
	PCT	PCT
1. Bob Guelker ('59-66)	.886	
2. Harry Keough ('67-82)	.751	
3. Bob Warming ('97-00)	.747	
4. Joe Clarke ('83-96)	.712	

Coach	Total Wins	
	Wins	Wins
1. Harry Keough ('67-82)	213	
2. Joe Clarke ('83-96)	205	
3. Bob Guelker ('59-66)	95	
4. Bob Warming ('97-00)	60	



Brian McBride / Columbus Crew



# SEASON RECORDS

## Individual

Player	Total Points		
	G	A	Pts
1. Carl Gentile (1963)	30	10	70
2. Carl Gentile (1964)	27	7	61
3. Brian McBride (1993)	24	9	57
4. Mike Seerey (1971)	24	7	55
5. Matt McKeon (1995)	17	20	54
6. Pat McBride (1963)	18	17	53
7. Gerry Balassi (1960)	19	14	52
8. Gerry Endler (1959)	24	3	51
9. Brian McBride (1991)	20	9	49
Brian McBride (1992)	16	17	49
11. Jack Kinealy (1965)	23	1	47
12. Gerry Balassi (1962)	16	14	46
Matt McKeon (1993)	15	16	46
14. Tom Hayes (1983)	19	7	45
15. Don Range (1960)	16	12	44
Pat McBride (1964)	18	8	44
Steve Sullivan (1979)	20	4	44
18. Steve Sullivan (1980)	19	4	42
19. John Hayes (1981)	17	5	39
Bob Trigg (1961)	14	11	39

Total Goals	
1. Carl Gentile (1963)	30
2. Carl Gentile (1964)	27
3. Jack Kinealy (1965)	24
George Endler (1959)	24
Mike Seerey (1971)	24
Brian McBride (1993)	24
7. Steve Sullivan (1979)	20
Brian McBride (1991)	20
9. Steve Sullivan (1980)	19
Tom Hayes (1983)	19
Gerry Balassi (1960)	19

Total Assists	
1. Matt McKeon (1995)	20
2. Pat McBride (1963)	17
Mike Sorber (1991)	17
Brian McBride (1992)	17
5. Matt McKeon (1993)	16
6. Don Huber (1978)	15
7. Gerry Balassi (1962)	14
Gerry Balassi (1960)	14
9. Tom Trost (1959)	13
Pat McBride (1965)	13
Tom Malle (1979)	13
Denny Hadican (1971)	13

## Goalkeeper

Most Wins (since '84)	
1. Kevin Johnston (1988, 1990)	18
2. Jay Zaber (1992)	17
3. Casey Klipfel (1997)	16
4. Paul Nagy (1999)	16
4. Shaun Fogarty (1991)	15
5. Steve Fuchs (1986)	13
6. Kevin Johnston (1989)	12
Eddie L'Hommedieu (1993)	12
Casey Klipfel (1994)	12

Goals Against Average (since '74)	
1. Rob Vallero (1974)	0.45
2. Eddie L'Hommedieu (1993)	0.55
3. John Politis (2000)	0.57
4. Rob Vallero (1976)	0.61
5. Casey Klipfel (1997)	0.65
6. Kevin Johnston (1988)	0.73
Shaun Fogarty (1991)	0.73
8. Kevin Johnston (1990)	0.79
9. Pat Baker (1984)	0.87

Total Saves	
1. Rov Vallero (1974)	141
2. Jim Tietjens (1979)	118
3. Rick Apodaca (1977)	113
4. Jim Tietjens (1978)	107
5. Pat Baker (1982)	104

Shutouts	
1. Kevin Johnston (1988)	16
2. Kevin Johnston (1990)	12
3. Shaun Fogarty (1991)	10
4. Eddie L'Hommedieu (1993)	9

## Team

Total Points	
1. 1964	240
2. 1962	205

Goals	
1. 1963	94
2. 1964	88
3. 1960, 1962	73
5. 1959	71

Assists	
1. 1991	71
2. 1960	64
3. 1992	62

Goals Allowed	
1. 1994	33
2. 1996	32
3. 1987	30
4. 1983	26
5. 1985, 1992, 1999	25

Shutouts	
1. 1988	16
2. 1991	13
3. 1989, 1990, 1993	12
4. 1997	10

Saves	
1. 1979	154
2. 1974	152
3. 1983	132

## Robert R. Herman Stadium Records

### Single Game

**Goals**  
 SLU: 9 (twice) last vs. Vanderbilt (9/1/00)  
 Opp: 4 Indiana (9/18/94)

**Shots on Goal**  
 SLU: 28 vs. Memphis State (9/6/93)  
 Opp: 12 SIU Edwardsville (9/27/91)

**Total Shots**  
 SLU: 39 vs. Westminster (9/1/99)  
 Opp: 17 Creighton (10/29/94)

**Corner Kicks**  
 SLU: 17 vs. Marquette (9/21/90)  
 Opp: 15 Indiana (9/20/92)

**Goalie Saves**  
 SLU: 8 vs. Indiana (9/21/92)  
 Opp: 15 on three occasions  
 - last Cincinnati (10/3/91)

### Single Season

**Most Wins:** 13 (1991)  
**Most Losses:** 2 (1990, 1994, 1999, 2000)

**Most Ties:** 3 (2000)

**Most SLU Goals:** 40 (1991)

**Most Opponent Goals:** 13 (1999)

**Fewest SLU Goals:** 12 (1990)

**Fewest Opponent Goals:** 3 (1993)

**Unbeaten Seasons:** 13-0-1 (1991)  
 9-0-0 (1993)

# S I N G L E - G A M E R E C O R D S

## Individual

### Total Points

1. Carl Gentile vs. Chicago (10/13/63) 12
2. George Endler vs. Dayton (1959) 10  
George Endler vs. MacMurray (1959) 10  
Timmy Knox vs. Indiana Tech (10/17/62) 10

### Goals

1. Carl Gentile vs. Chicago (10/13/63) 6
2. George Endler vs. Dayton (1959) 5  
George Endler vs. MacMurray (1959) 5
4. 10 players tied with 4

### Assists

1. Brad Davis vs. Vanderbilt (9/1/00) 3  
Matt McKeon vs. UAB (10/10/93) 3  
Matt McKeon vs. Stanford (10/3/93) 3  
Mike Seerey vs. Rider (9/21/70) 3  
John Pisani vs. SIU-C (10/4/67) 3  
Tom Bokern vs. MacMurray (10/15/66) 3  
Gerry Balassi vs. Akron (11/15/61) 3

### Shots

1. George Endler vs. Chicago (1959) 20
2. George Endler vs. MacMurray (1959) 19
3. Bob Trigg vs. Indiana (9/29/62) 18
4. Jack Kinealy vs. Air Force (9/24/66) 14  
Jack Kinealy vs. Indiana (9/30/66) 14
6. Carl Gentile vs. Wheaton (10/2/65) 13  
Gerry Balassi vs. Washington (10/25/62) 13  
Bob Trigg vs. Notre Dame (10/6/62) 13

### Total Saves

1. Rob Vallero vs. Howard (12/5/74) 17
2. Casey Klipfel vs. SMU (11/19/95) 14  
Pat Baker vs. Alabama A&M (9/19/81) 14
4. Rob Vallero vs. Quincy (10/19/74) 13
5. Steve Fuchs vs. UMSL (10/29/85) 12  
Pat Baker vs. Wisconsin (10/4/81) 12  
Rob Vallero vs. Washington (10/11/74) 12

## Team

### Total Points

1. vs. Illinois (10/3/64) 44
2. vs. Indiana Tech (10/17/62) 39
3. vs. Chicago (10/13/63) 32
4. vs. Vanderbilt (9/1/00) 27
4. vs. Chicago (10/27/62) 26

### Goals

1. vs. Chicago (10/13/63) 16  
vs. Illinois (10/3/64) 16
3. vs. Indiana Tech (10/17/62) 14
4. vs. Chicago (10/27/62) 13
5. vs. Washington (10/19/63) 12

### Goals Allowed

1. vs. SIU-Carbondale (10/4/67) 5  
vs. San Francisco (9/20/75) 5  
vs. Indiana (10/10/76) 5  
vs. Clemson (10/4/87) 5

### Most Shots (since '76)

1. vs. Westminster (9/1/99) 39
2. vs. Cleveland State (9/19/76) 35
3. vs. Ill.-Chicago Circle (11/7/76) 33
4. vs. SIU Edwardsville (9/8/95) 30  
vs. Mo.-St. Louis (9/9/84) 30
6. vs. Washington (Mo.) (8/31/86) 29  
vs. Western Illinois (9/12/76) 29

### Assists

1. vs. Purdue (11/12/60) 12  
vs. Illinois (10/3/64) 12
3. vs. Indiana Tech (10/17/62) 11
4. vs. Bradley (10/19/88) 9  
vs. Vanderbilt (9/1/00) 9

### Saves

1. vs. Howard (12/5/74) 17
2. vs. SMU (11/19/95) 14
3. vs. Quincy (10/19/74) 13
4. vs. Mo.-St. Louis (10/29/85) 12  
vs. Wisconsin (10/4/81) 12  
vs. Washington (10/11/74) 12



Tim Leonard celebrates a Saint Louis goal

## MISC. RECORDS / TEAM AWARDS

### All-Time Record

573-151-67 (.767)

### Consecutive Winning Seasons

37 (1959 - 96)

### Most Wins

20-2-2 (1991)

### Fewest Wins

5-10-3 (1996)

### Most Improved W-L Record

+11.5 (1997) 16-5-4 after 5-10-3 (1996)

### Longest Winning Streak

1. 24 games (1970-71)
2. 19 games (1969-70)

### Longest Unbeaten Streak

45 games (1969-71)

### Longest Losing Streak

5 (1996)

### Longest Winless Streak

7 (1996)

### Consecutive Home Wins

22 (1968-72)

### Consecutive Road Wins

14 (1970-71)

### Consecutive Shutout Games

1. 7 (1974)
2. 6 (1988)
3. 5 (1993)

### Time Elapsed Between Goals by Same Player

Matt McKeon vs. Dayton (9/6/93) 00:22

### Fastest Goal to Start a Game

Matt McKeon vs. UALR (10/21/94) 00:14

### Consecutive Shutout Minutes

John Politis (9/15/00 - 11/4/00) 554:48

### Twelfth Man

Recognition for meritorious service and support to Billiken soccer.

- 1984 Bill Hopfinger
- 1985 Bill McDermott
- 1986 Dan Flynn
- 1987 Fred Weber
- 1988 Glenn Jamboretz
- 1989 Dr. Robert Burdge
- 1990 Rev. Lawrence Biondi, SJ
- 1991 Jim Liebe
- 1992 William & Jack Massa
- 1993 Tom DeGrand
- 1994 Steve Santel
- 1995 Jan Mangelsdorf
- 1996 John Kuntz
- 1997 Joe Westhus
- 1998 Paul Stark, SJ
- 1999 Rich Moffitt, Jim Anthony
- 2000 Steve Bee, Jason Huber, Dan Merlo, Jeff Mika, Jay Zaber

### Alumni Achievement

Recognition of former players or staff for professional and personal achievements subsequent to graduation.

- 1985 Pat Leahy
- 1986 Al Trost
- 1987 Mike Shanahan, J. Kim Tucci
- 1988 Brad Melchoir
- 1989 John Eilerman
- 1990 Bill McDermott
- 1991 Steve Frank
- 1992 Dan Leahy
- 1993 Denny Hadican
- 1994 Mike Sorber, Ty Keough, Bob Albus, Dan Flynn, Bill McDermott
- 1995 Jim Bokern
- 1996 Jim Tietjens
- 1997 Dan Counce
- 1998 Brian McBride, Jim Kavanaugh, Bruce Hudson
- 1999 Daryl Doran, John Johnson
- 2000 Don Brennan, Ph.D.

### Most Valuable Player

The player most vital to the team's success, as chosen by the players.

- 1973 Chuck Zorumski
- 1974 Bruce Hudson
- 1975 Joe Clarke
- 1976 Bruce Rudroff
- 1977 Dan Flynn
- 1978 Larry Hulcer
- 1979 Steve Sullivan
- 1980 Steve Sullivan/John Hayes
- 1983 Tom Hayes
- 1984 Dan Walters
- 1985 Dan Walters
- 1986 Steve Fuchs
- 1987 Dan Walters
- 1988 Steve Eise
- 1989 David Toural/John Johnson
- 1990 Mark Santel
- 1991 Steve Kuntz
- 1992 Brian McBride
- 1993 Brian McBride/Shane Battelle
- 1994 Matt McKeon
- 1995 Matt McKeon
- 1996 Tim Leonard
- 1997 Kevin Quigley
- 1998 Mike Moriarty
- 1999 Jeff DiMaria
- 2000 Joe Hammes, Jack Jewsbury

### Mark Demling Award

The player who puts the team first and foremost, and gives everything he has to the team, as chosen by the players.

- 1983 Chris Kenny
- 1984 Steve Hunsicker
- 1985 Steve Hunsicker
- 1986 Tim Miramonti
- 1987 Richie Bright
- 1988 Tom Strunk
- 1989 Richie Bright
- 1990 Richie Bright/Steve Bee
- 1991 Steve Kuntz
- 1992 Shane Battelle/Scott McDaniel
- 1993 Shane Battelle
- 1994 Chris Santel
- 1995 Eric Cherveney
- 1996 Ken Costello
- 1997 Mike Moriarty
- 1998 Ken Costello
- 1999 Jason Mims
- 2000 Mike Hill/Bobby O'Connell

### Goal of the Year

Best goal of the season as chosen by the players.

- 1986 Mike Donnelly vs. Indiana
- 1987 Dan Walters vs. Eastern Illinois
- 1988 Tie - Mark Santel vs. Evansville; Jason Huber vs. SIUE
- 1989 Mark Santel vs. Detroit
- 1990 Jason Huber vs. Northern Illinois
- 1991 Brian McBride vs. N.C. State
- 1992 Jeff Davis vs. Quincy College
- 1993 Shane Battelle vs. San Francisco
- 1994 Matt McAvin vs. North Carolina
- 1995 Matt McKeon vs. Charlotte
- 1996 Mark Filla vs. UCLA
- 1997 Brian Hadican vs S. Florida
- 1998 Mike Moriarty vs. UAB
- 1999 Jeff DiMaria vs. Indiana
- 2000 Brad Davis vs. St. John's

## YEARLY SCORING LEADERS

Goals		Assists		Total Points		
1959	George Endler	24	1959 Tom Trost	13	1959 George Endler	51
1960	Gerry Balassi	19	1960 Gerry Balassi	14	1960 Gerry Balassi	52
1961	Gerry Balassi	17	1961 Tony Tieber	12	1961 Gerry Balassi	45
1962	Gerry Balassi	16	1962 Gerry Balassi	14	1962 Gerry Balassi	46
1963	Carl Gentile	30	1963 Pat McBride	17	1963 Carl Gentile	70
1964	Carl Gentile	27	1964 Terry Knox	9	1964 Carl Gentile	61
1965	Jack Kinealy	23	1965 Pat McBride	13	1965 Jack Kinealy	47
1966	Jack Kinealy	11	1966 Tom Bokern	8	1966 Jack Kinealy	24
1967	John Pisani	6	1967 John Pisani	6	1967 John Pisani	18
1968	John Pisani	8	1968 Tom Bokern	6	1968 John Pisani	18
1969	Al Trost	11	1969 Gene Geimer	7	1969 Al Trost	25
1970	Dan Counce	14	1970 Dan Counce	8	1970 Dan Counce	36
1971	Mike Seerey	24	1971 Denny Hadican	13	1971 Mike Seerey	55
1972	Mike Seerey	14	1972 Bob O'Leary	8	1972 Mike Seerey	32
1973	Dan Counce	11	1973 Tim Logush	5	1973 Dan Counce	26
1974	Kevin Handlan, Tim Logush	8	1974 Don Aubuchon, Pete Collico	7	1974 Kevin Handlan, Tim Logush	22
1975	Don Aubuchon	12	1975 Don Aubuchon	7	1975 Don Aubuchon	31
1976	Tom Malle	7	1976 Larry Hulcer	6	1976 Don Huber, Tom Malle	17
1977	Don Huber	5	1977 Ty Keough	7	1977 Don Huber	15
1978	Don Huber	17	1978 Don Huber	15	1978 Don Huber	49
1979	Steve Sullivan	20	1979 Tom Malle	13	1979 Steve Sullivan	44
1980	Steve Sullivan	19	1980 Mike O'Mara, Joe Olwig	7	1980 Steve Sullivan	42
1981	John Hayes	17	1981 John Hayes	5	1981 John Hayes	39
1982	Joe Olwig	7	1982 Dave Fernandez	4	1982 Joe Olwig	17
1983	Tom Hayes	19	1983 Steve Maurer	12	1983 Tom Hayes	45
1984	Dan Walters	13	1984 Dan Walters	7	1984 Dan Walters	33
1985	Dan Walters	10	1985 Steve Hunsicker, Tim Strange	6	1985 Dan Walters	22
1986	Tim Miramonti	8	1986 Tim Strange	6	1986 Dan Walters, Tim Miramonti	19
1987	Dan Walters	10	1987 Steve Kickham	10	1987 Dan Walters	25
1988	Dave Toural	16	1988 John Johnson	12	1988 Dave Toural	36
1989	Dave Toural	13	1989 John Johnson	12	1989 Dave Toural	30
1990	Brian McBride	12	1990 Brian McBride, Mark Santel	5	1990 Brian McBride	29
1991	Brian McBride	20	1991 Mike Sorber	17	1991 Brian McBride	49
1992	Brian McBride	16	1992 Brian McBride	17	1992 Brian McBride	49
1993	Brian McBride	24	1993 Matt McKeon	16	1993 Brian McBride	57
1994	Matt McKeon	12	1994 Matt McKeon	7	1994 Matt McKeon	31
1995	Matt McKeon	17	1995 Matt McKeon	20	1995 Matt McKeon	54
1996	Tim Leonard	7	1996 Tim Leonard	4	1996 Tim Leonard	18
1997	Brian Benton	7	1997 Kevin Quigley	13	1997 Kevin Quigley	23
1998	Dominic DaPra	8	1998 Jason Mims	8	1998 Dominic DaPra	20
1999	Jeff DiMaria, Jason Mims	9	1999 Marty Tappel, Brian Hadican	9	1999 Jeff DiMaria	26
2000	Jack Jewsbury	13	2000 David Beck, Brad Davis, Nick Walls	6	2000 Jack Jewsbury	31

# HONOR ROLL

## Billikens in the Pros

### • A - D •

**Pat Baker** Tacoma Stars, St. L. Steamers  
**Shane Battelle** Columbus Crew  
**Jim Bokern** St. L. Stars  
**David Brcic** NY Cosmos, Wichita Wings, L.A. Lazers  
**Derek Carroll** St. Louis Ambush  
**Don Ceresia** St. L. Stars  
**Joe Clarke** St. L. Stars, Calif. Surf, St. L. Steamers  
**Ken Costello** St. L. Steamers  
**Dan Counce** Boston, San Antonio, Hawaii, California, Toronto, St. L. Steamers  
**Pete Collico** St. L. Steamers  
**Craig Corbett** Lafayette Swampcats  
**Jeff Davis** Colorado Foxes  
**Mark Demling** St. Louis Steamers  
**San Jose, San Diego, San Francisco**  
**Jeff DiMaria** Colorado Rapids  
**St. Louis Steamers**  
**Daryl Doran** St. L. Steamers, St. L. Storm, St. L. Ambush  
**Don Droege** Rochester, Washington, Atlanta, Tulsa, Tampa Bay, St. L. Steamers  
**Jim Draude** St. L. Steamers

### • E - J •

**Steve Eise** St. L. Steamers  
**Dave Fernandez** L.A. Lazers, Louisville Thunder  
**Joe Filla** Kansas City Comets  
**Steve Frank** St. L. Stars  
**Mark Frederickson** Kansas City Comets, St. L. Steamers, St. L. Storm  
**Jack Galmiche** St. L. Stars  
**Gene Geimer** St. Louis, Boston, Chicago  
**Carl Gentile** St. L. Stars  
**Denny Hadican** Seattle Sounders  
**Kevin Handlan** Tulsa, San Jose, St. L. Steamers, Chicago, Kansas City  
**John Hayes** St. L. Steamers  
**Tom Hayes** St. L. Steamers, Louisville Thunder  
**Don Huber** Minnesota, Tulsa, Baltimore  
**Bruce Hudson** St. L. Stars  
**Larry Hulcer** Los Angeles, New York, St. L. Steamers  
**Steve Hunsicker** St. L. Steamers  
**Johnny Johnson** St. L. Steamers

### • K - N •

**Kevin Kalish** Kansas City Wizards  
**St. L. Ambush**  
**Jim Kavanaugh** L.A. Lazers, St. L. Steamers  
**Chris Kenny** Chicago, St. L. Steamers  
**Ty Keough** Cincinnati, San Diego  
**St. L. Steamers**  
**Jack Kinealy** St. L. Stars  
**Casey Klipfel** Nashville Metros  
**Steve Kuntz** St. L. Ambush, Milw. Rampage  
**Tom Layton** St. L. Stars  
**Jim Leeker** St. L. Stars  
**Tim Leonard** Nashville Metros  
**Hershey A-League**  
**Tim Logush** St. Louis, New Jersey, Indianapolis  
**Bob Matteson** St. L. Stars  
**Steve Maurer** Cleveland, Canton  
**Scott MacDonald** St. L. Steamers  
**Brian McBride** Milw. Rampage, Wolfsburg, Germany, Columbus Crew  
**St. L. Stars**  
**Pat McBride** St. L. Ambush,  
**Scott McDoniel** Milw. Rampage, St. L. Steamers  
**Bill McKeon** Kansas City  
**Matt McKeon** Kansas City Wizards  
**Colorado Rapids**  
**Jay Moore** Dallas  
**Ed Nuesel** St. L. Stars

### • O - Z •

**Bob O'Leary** St. Louis, California  
**Mike O'Meara** St. L. Steamers  
**Ed Pinon** Colorado Foxes, Kansas City Attack  
**St. L. Stars**  
**John Pisani** Nashville Metros  
**Kevin Quigley** St. L. Steamers  
**Gary Rensing** St. L. Stars, Chicago  
**John Roselein** New Jersey, Indianapolis  
**Bruce Rudroff** Seattle, Hartford, Memphis  
**Tanner Rupp** L.A. Zodiak  
**Mark Santel** St. L. Storm, Colorado Foxes, Dallas Burn  
**Dave Schlitt** St. Louis  
**Frank Schuler** St. L. Steamers  
**Mike Seerey** Miami, St. Louis  
**Mike Sorber** Kansas City Wizards, NY/NJ Metrostars  
**Tom Strunk** St. L. Steamers  
**Steve Sullivan** St. L. Steamers  
**Jim Tietjens** Ft. Lauderdale, Kansas City  
**Al Trost** St. L. Stars, Calif. Surf, Seattle  
**Scott Vorst** Los Angeles, St. L. Steamers  
**Denny Werner** Indianapolis  
**Brad Wilson** L.A. Galaxy  
**Chuck Zorumski** St. L. Stars



Mark Santel / Dallas Burn

# HONOR ROLL

## Billiken All-Americans

### • B - G •

Gerry Balassi	First team 1962 Second team 1961
Shane Battelle	First team 1993
Don Ceresia	First team 1964
Joe Clarke	Hon. Mention 1975
Dan Counce	Hon. Mention 1973
Brad Davis	Freshman 2000
Jeff DiMaria	First Team 1999
Don Droege	1975
Jack Dueker	First team 1959
Steve Fuchs	Second team 1986
Steve Frank	Second team 1968
Mark Frederickson	Hon. Mention 1979 Second team 1980
Carl Gentile	First team 1965

### • H - K •

Joe Hamm	Second team 1970 Hon. Mention 1971
John Hayes	Hon. Mention 1979 Second team 1980 First team 1981
Joe Hennessey	First team 1963
Don Huber	Hon. Mention 1978
Bruce Hudson	First team 1974
Larry Hulcer	Hon. Mention 1978
Jack Jewsbury	Third team 2000
John Johnson	Second team 1988, 1989
Kevin Kalish	First team 1998
Chris Kenny	Second team 1983
Ty Keough	Hon. Mention 1975, 1977 First team 1976, 1978
Jack Kinealy	First team 1966
John Klein	Second team 1960
Jerry Knobbe	1959
Steve Kuntz	Second team 1991

Bob Malone  
Bob Matteson

Brian McBride

Pat McBride

Bill McKeon

Matt McKeon

John Michalski

Kevin Quigley

Steve Rick

Bruce Rudroff

Mark Santel

Mike Seerey

Steve Sullivan

Jim Tietjens

Al Trost

Tom Trost

Bill Vieth

Wally Werner

### • M - S •

First team 1961  
Hon. Mention 1971,  
1973

Second team 1992

First team 1993

First team 1964,  
1965

Hon. Mention 1979

First team 1980

First team 1994, 1995

Hon. Mention 1993

Hon. Mention 1961

Third team 1997

Hon. Mention 1966

Hon. Mention 1974,  
1976

First team 1988

Second team 1989,  
1990

First team 1971

Second team 1979

### • T - W •

Second team 1979

First team 1969

1959

First team 1962

Hon. Mention 1963

First team 1967

## Billiken Pro Coaches

Dan Counce	Baltimore Blast
Daryl Doran	St. L. Ambush, St. L. Steamers
Pat McBride	St. L. Steamers, Kansas City Comets
Al Trost	St. L. Steamers

## Billiken College Coaches

Joe Clarke	Saint Louis U. Washington U.(Mo.)
Ty Keough	Washington U.(Mo.)
Pat McBride	SLCC - Forest Park
Tim Strange	McKendree College
Jamie Vargas	Westminster College

## Billiken Olympians

Bob Guelker	Coach, 1972
Joe Hamm	1972
Jack Kinealy	1968
Bill McKeon	1980
Mike Seerey	1972
Al Trost	1972
Matt McKeon	1996

## Billikens on U.S. World Cup Team

Mike Sorber	1994
Brian McBride	1998

## Billikens in the NFL

Pat Leahy	New York Jets
Carl Gentile	Houston Oilers



Mike Sorber / Chicago Fire

## Billikens Fastest to 500 Victories

Saint Louis University soccer is synonymous with success. The Bills added another chapter to their history when Saint Louis notched its 500th victory by blanking South Florida 4-0 on Sept. 30, 1995, at the St. Louis Soccer Park.

According to soccer historian Mickey

Cochran, Saint Louis attained 500 wins faster than any other NCAA Division I institution. The Billikens hold the NCAA record for most national championships (10), successive appearances in the NCAA championship match (six), total NCAA Tournament appearances (38) and victories in NCAA tourney action (57).

# ALL-TIME RESULTS



**Bob Guelker**  
95-10-5 (8 Seasons)  
8 NCAA Appearances  
5 NCAA Championships

### 1959 NCAA Champions 11-1-0

SLU	OPP
9/26	10 Dayton (A) 0
10/3	6 Illinois (A) 1
10/7	11 MacMurray (H) 1
10/11	5 Indiana (H) 0
10/17	4 Michigan State (A) 2
10/24	6 Chicago (H) 0
10/31	8 Navy Pier (H) 0
11/7	1 Wheaton (A) 2
11/14	5 Purdue 0
11/22	4 San Francisco (H) 0
11/26	6 CCNY (N) 2
11/28	5 Bridgeport (N) 3
71	10

### 1960 NCAA Champions 14-1-0

SLU	OPP
9/17	2 Fairleigh-Dickinson(A) 3
9/24	4 Wheaton (H) 0
10/1	3 Illinois (A) 0
10/8	12 Indiana 0
10/11	5 Washington (Mo.) (H) 1
10/15	4 Michigan State (A) 0
10/22	4 Pittsburgh (H) 0
10/28	3 Air Force (A) 1
11/5	2 Navy Pier (A) 0
11/6	10 Chicago (A) 0
11/12	12 Purdue (H) 0
11/18	5 Akron (H) 3
11/21	2 California (H) 0
11/25	2 West Chester (N) 1
11/26	3 Maryland (N) 2
73	11

### 1961 NCAA Runner-up 13-2-0

SLU	OPP
9/23	4 Navy Pier (H) 1
9/30	2 Akron 3
10/8	4 Illinois (H) 0
10/12	4 Washington(Mo.) (H) 3
10/14	8 Indiana (H) 1
10/21	12 Indiana Tech. (H) 0
10/21	4 Pittsburgh (A) 0
10/28	4 Air Force (H) 1
11/4	2 Wheaton (A) 0

11/5	10 Chicago (A) 1
11/11	1 Michigan State (A) 0
11/15	7 Akron (H) 2
11/18	1 San Francisco (A) 0
11/23	6 Rutgers 1
11/25	0 West Chester 2
69	15

### 1962 NCAA Champions 12-0-1

SLU	OPP
9/29	6 Indiana (A) 1
10/6	3 Notre Dame (A) 3
10/10	2 Harris Teachers (H) 1
10/13	6 Navy Pier (A) 1
10/17	14 Indiana Tech. (A) 0
10/20	7 Illinois (H) 0
10/25	2 Washington(Mo.) (H) 1
10/27	13 Chicago (H) 0
11/3	3 Wheaton (H) 0
11/10	2 Michigan State (H) 1
11/17	9 Stanford (H) 3
11/22	2 Michigan State (H) 0
11/24	4 Maryland (H) 3
73	14

### 1963 NCAA Champions 13-1-0

SLU	OPP
9/21	4 Air Force (H) 0
9/25	3 MacMurray (H) 0
9/28	12 Ball State (H) 0
10/4	8 Notre Dame (H) 1
10/12	5 Wheaton (A) 0
10/13	16 Chicago (A) 0
10/19	12 Washington (A) 0
10/26	6 Miami (Fla.) (A) 0
11/2	10 Illinois (A) 2
11/9	3 Michigan State (A) 4
11/22	2 Michigan State (H) 0
11/27	3 San Francisco (A)(OT) 2
12/5	7 Maryland (A) 3
12/7	3 Navy (A) 0
94	10

### 1964 NCAA Semi-finalist 11-1-1

SLU	OPP
9/26	4 Air Force (A) 2
10/3	16 Illinois (A) 0
10/7	8 MacMurray (A) 1
10/10	10 Navy Pier (A) 0
10/11	10 Marquette (A) 1
10/17	5 Washington (Mo.)(H) 0
10/24	7 Miami (Fla.) (H) 0
10/31	7 Georgia Tech. (H) 0
11/7	1 Michigan State (H) 1
11/14	6 Wheaton (H) 2
11/18	8 Indiana (H) 2
11/28	5 San Jose State (H) 0
12/3	1 Navy (A) 2
88	11

### 1965 NCAA Champions 14-0-0

SLU	OPP
9/25	6 Illinois (A) 0
10/2	1 Wheaton (A) 0
10/3	4 Northwestern (A) 0
10/9	10 Notre Dame (A) 0
10/16	4 Air Force (H) 0
10/23	6 Miami (Fla.)(A) 2
10/30	6 Alumni (H) 1
11/6	3 Michigan State (A) 2
11/10	5 MacMurray (H) 1
11/13	10 Marquette (H) 0
11/20	2 Ohio (H) 1
11/27	3 San Francisco (A) 2
12/2	3 Navy (H) 1
12/4	1 Michigan State (H) 0
64	10

### 1966 NCAA Semi-finalist 7-4-3

SLU	OPP
9/24	2 Air Force (A) 0
9/28	1 Quincy (A) 2
9/30	2 Indiana (A) 2
10/2	0 Rockhurst (A) 1
10/8	1 British Columbia (A) 0
10/9	1 Kutzt (A) 2
10/15	5 MacMurray (A) 0
10/22	9 Miami (Fla.) (H) 0
10/23	6 Northwestern (H) 0
10/29	0 Alumni (H) 0
11/5	1 Michigan State (H) 1
11/12	4 Illinois (A) 1
11/20	5 Colorado College (A) 1
11/26	1 San Francisco (A) 2
38	12



championship trophy

# ALL-TIME RESULTS



**Harry Keough**  
213-50-22 (16 Seasons)  
15 NCAA Appearances  
5 NCAA Championships

### 1967 NCAA Co-Champions 8-3-2

SLU	OPP
9/16	0
9/23	4
10/4	4
10/11	1
10/14	3
10/21	1
10/30	3
11/4	4
11/11	0
11/18	6
11/25	4
11/30	1
12/2	0
<b>31</b>	<b>19</b>

### 1968 10-1-1

SLU	OPP
9/20	1
9/22	4
10/5	3
10/13	3
10/15	6
10/19	2
10/26	0
11/02	5
11/10	6
11/16	3
11/22	1
<b>38</b>	<b>8</b>

### 1969 NCAA Champions 13-0-0

SLU	OPP
9/20	2
9/25	3
9/27	2
10/4	8
10/11	6
10/18	2
10/25	2
11/1	8
11/8	3
11/22	4
11/29	2

12/4	2
12/6	4
<b>48</b>	<b>7</b>

### 1970 NCAA Champions 14-0-1

SLU	OPP
9/19	4
9/21	6
9/25	3
10/3	4
10/10	3
10/13	5
10/17	0
10/24	5
10/25	5
10/31	8
11/7	3
11/21	7
11/28	2
12/3	1
12/5	1
<b>57</b>	<b>6</b>

### 1971 NCAA Finalist 17-1-0

SLU	OPP
9/4	2
9/11	2
9/18	8
9/19	5
9/25	11
9/29	9
10/2	3
10/5	2
10/9	4
10/16	2
10/23	4
10/30	5
11/6	2
11/20	4
11/27	4
12/4	3
12/30	3
12/30	2
<b>75</b>	<b>15</b>

### 1972 NCAA Champions 15-2-3

SLU	OPP
9/9	0
9/16	1
9/19	11
9/23	5
9/24	7
9/25	0
9/26	1
9/28	1
9/30	4
10/7	5
10/8	4
10/14	3
10/21	0
10/28	1
11/5	1
11/18	7
11/23	2

12/8	3
12/27	2
12/29	4
<b>62</b>	<b>12</b>

### 1973 NCAA Champions 15-2-3

SLU	OPP
9/8	3
9/13	2
9/15	2
9/17	2
9/20	1
9/22	2
9/23	4
9/29	5
10/6	0
10/8	1
10/13	2
10/27	2
10/29	3
11/3	1
11/17	0
11/19	1
11/24	6
12/9	3
1/2	3
1/4	2
<b>41</b>	<b>16</b>

### 1974 NCAA Finalist 18-3-1

SLU	OPP
9/7	2
9/13	2
9/20	1
9/21	8
9/23	1
9/28	0
9/29	3
10/4	4
10/6	2
10/10	4
10/11	3
10/12	1
10/19	0
10/25	2
10/27	6
11/2	1
11/8	0
11/10	2
11/24	1
11/29	2
12/5	3
12/7	1
<b>48</b>	<b>13</b>

### 1975 13-5-2

SLU	OPP
9/6	2
9/11	2
9/13	2
9/15	2
9/20	2
9/21	3
9/27	2



10/3	2	UCLA (H)	0
10/5	1	Clemson (A)	2
10/11	4	Indiana (H)	1
10/12	3	Rockhurst (H)	1
10/18	1	Western Illinois (A)	0
10/24	1	Quincy (H)(ot)	1
10/26	6	S. Methodist (H)	2
10/30	2	Rollins (A)	0
11/1	0	S. Florida (A)(ot)	0
11/7	1	SIU Edwardsville (N)	2
11/9	6	Illinois Chicago (A)	0
11/22	2	Akron (N)	1
11/29	1	SIU Edwardsville (A)	2
	45		24

**1976**  
14-4-1

SLU	OPP		
9/10	1	Mo.-St. Louis (H)	0
9/12	1	Western Illinois (H)	0
9/19	6	Cleveland State (H)	0
9/24	1	San Francisco (A)	1
9/25	1	San Jose State (A)	0
9/28	4	Santa Clara (A)	1
9/30	2	Westmont (A)	0
10/2	1	UCLA (A)	2
10/3	5	California (A)	1
10/9	2	Rockhurst (A)	0
10/10	1	Indiana (A)	5
10/15	2	Quincy (A)	1
10/22	1	Clemson (H)	3
10/30	2	UW-Green Bay (A)	0
10/31	2	South Florida (H)	0
11/6	1	SIU Edwardsville (H)	0
11/7	4	Chicago (H)(ot)	3
11/12	3	S. Methodist (A)	0
11/21	1	SIU Edwardsville (H)	3
	41		20

**1977**  
13-5-0

SLU	OPP		
9/2	1	Mo.-St. Louis (H)	0
9/8	2	Springfield (A)	1
9/10	1	Connecticut (A)	0
9/12	2	Brown (A)	1
9/17	2	Akron (A)	1
9/19	0	Cleveland State (A)	1
9/23	2	San Francisco (H)	1
10/9	2	Rockhurst (H)	0
10/12	3	Harris-Stowe (H)	0
10/15	3	Northern Illinois (A)	0
10/21	3	Quincy (H) (ot)	2
10/23	1	Clemson (A)	3
10/27	3	Rollins (A)	2
10/29	2	South Florida (A)	1
11/4	2	SIU Edwardsville (H)	3
11/8	3	Western Illinois (A)	2
11/13	0	Indiana (H)	1
11/18	0	Cleveland State (A)	2
	32		21

**1978**  
16-4-1

SLU	OPP		
8/25	4	Evansville (A)	2
9/4	8	Covenant (A)	1
9/8	2	Mo.-St. Louis (A)	1

9/10	2	Eastern Illinois (H)	0
9/15	2	Cleveland State (H)	0
9/17	7	Cincinnati (H)	0
9/22	2	San Francisco (A)	3
9/23	3	San Jose State (A)	1
9/30	9	James Madison (A)	0
10/1	3	Loyola(MD) (A)	2
10/8	0	Indiana (A)	2
10/11	2	N. Texas St. (H)(ot)	2
10/14	0	Quincy (A)	1
10/17	3	Harris-Stowe (H)	2
10/20	3	Fair.-Dickenson (H)	1
10/22	5	UW-Milwaukee (H)	0
10/29	3	Rollins (H)	1
10/31	2	South Florida (H)	1
11/5	4	Western Illinois (H)	1
11/11	1	SIU Edwardsville (N)	0
11/19	2	SIU Edwardsville (H)	3
	67		24

**1979**  
14-5-0

SLU	OPP		
8/31	3	Mo.- St. Louis (H)	0
9/28	2	UCLA (H)	0
9/8	2	Connecticut (H)	1
9/10	2	Boston College (A)	0
9/14	3	Evansville (H)	0
9/16	2	Cleveland State (A)	1
9/21	3	Loyola (Md.) (H)	1
9/25	5	Harris-Stowe (A)	0
9/29	5	Rockhurst (A)	0
10/5	1	Indiana (H)	3
10/7	5	Cincinnati (A)	0
10/12	2	Hartwick (H)	1
10/14	0	Quincy (H)	1
10/18	1	Long Island (A)	0
10/20	0	Fair.-Dickinson (A)	1
10/25	2	Rollins (A)	1
10/27	4	South Florida (A)	2
11/2	0	SIU Edwardsville (N)	2
11/17	1	SIU Edwardsville (A)	2
	43		16

**1980**  
13-5-2

SLU	OPP		
9/1	2	Marquette (A)	1
9/2	0	UW-Milwaukee (A)	1
9/5	0	Connecticut (H)	2
9/7	3	Mo.-St. Louis (A)	0
9/12	1	Cleveland St. (H)(ot)	0
9/14	6	Notre Dame (H)	1
9/19	2	S. Methodist (A)	0
9/21	4	Texas Christian (A)	0
9/27	3	Hartwick (A)	1
9/29	2	Penn State (A)	3
10/5	3	Indiana (A)	0
10/11	4	Quincy (A)	2
10/13	0	San Francisco (H)	1
10/17	2	South Florida (H)	1
10/19	1	Rockhurst (H)	1
10/24	1	Avila (H)(ot)	1
10/26	7	Rollins (H)	0
10/30	5	SIU Edwardsville (H)	1
11/30	3	S. Methodist (H)	1
12/7	2	San Francisco (A)	3
	52		20

**1981**  
11-3-4

SLU	OPP		
9/2	3	Connecticut (A)(ot)	4
9/4	4	Fair.-Dickenson (A)	1
9/12	2	Cleveland St. (A)(ot)	1
9/13	3	Notre Dame (A)(ot)	4
9/16	3	Evansville (A)(ot)	3
9/19	2	Alabama A&M (H)	1
9/21	2	S. Methodist (H)(ot)	2
9/26	2	Rockhurst (A)	0
10/2	1	Indiana (H)	0
10/4	0	Wisconsin (H)(ot)	0
10/6	2	North Texas State (H)	0
10/9	3	Quincy (H)	1
10/22	1	Rollins (A)	1
10/24	2	South Florida (A)	1
10/30	2	SIU Edwardsville (A)	1
11/8	4	Brown (H)	0
11/10	3	Mo.-St. Louis (H)	1
11/20	0	Eastern Illinois (A)	1
	39		22

**1982**  
9-7-2

SLU	OPP		
9/2	3	Mo.-St. Louis (A)	0
9/5	4	Quincy (H)	1
9/10	1	North Texas St. (A)	1
9/12	1	S. Methodist (A)	2
9/15	0	Phil. Textile (H)(ot)	0
9/17	0	Santa Clara (A)	3
9/18	3	San Jose State (A)	0
9/24	3	Alabama A&M (H)	2
9/26	1	Cleveland State (H)	2
10/2	0	Indiana (A)	4
10/9	4	Quincy (A)	1
10/15	0	Eastern Illinois (A)	1
10/16	3	Western Illinois (A)	0
10/19	3	Avila (H)	2
10/22	3	Rockhurst (H)	1
10/24	2	Creighton (H)	0
10/29	0	SIU Edwardsville (A)	2
10/31	0	Rollins (H)	1
	31		23



Three-time All-American Mark Santel

# ALL-TIME RESULTS



**Joe Clarke**  
205-74-30  
(14 Seasons)  
12 NCAA Appearances  
1991 Final Four

### 1983 15-4-2

SLU	OPP
9/3	8 Loyola (Ill.) (H) 1
9/4	3 NE Louisiana (H) 2
9/10	3 Mo.-St. Louis (H) 1
9/16	3 Western Illinois (A) 0
9/18	2 Quincy (A) 1
9/20	5 Illinois State (A) 1
9/23	5 North Texas St. (H) 1
9/25	3 S. Methodist (H) 1
9/30	2 Indiana (H) 2
102	1 Rockhurst (A) 0
10/7	3 Quincy (H) 1
10/16	0 Alabama A&M (A) 4
10/19	4 Tulsa (H) 1
10/22	0 Eastern Illinois (H) 3
10/28	3 SIU Edwardsville (N) 1
11/4	1 Evansville (A) 1
11/6	5 Rollins (A) 1
11/9	0 South Florida (A) 1
11/16	2 S. Methodist (A) 1
11/20	2 Eastern Illinois (A) 1
11/27	1 Indiana (A) 2
56	26

### 1984 11-5-3

SLU	OPP
9/1	5 Creighton (H) 0
9/9	2 Mo.-St. Louis (A)(ot) 1
9/13	7 E. Michigan (H) 0
9/15	1 Loyola (MD) (H)(ot) 1
9/18	2 Western Illinois (H) 1
9/21	0 North Texas St. (A) 2
9/23	1 S. Methodist (A) 0
9/28	2 Indiana (A)(ot) 2
9/30	1 San Francisco (H) 2
10/7	3 Notre Dame (H) 1
10/12	4 Wisconsin (H) 1
10/14	1 Michigan State (H) 3
10/17	1 Quincy (A) 0
10/21	0 Eastern Illinois (A) 1
10/26	1 SIU Ed'ville (N)(ot) 0
11/2	0 S. Carolina (N)(ot) 0
11/3	2 Florida Int'l. (A) 1
11/23	5 S. Methodist (H) 3
12/2	2 Indiana (A) 4
40	22

### 1985 10-7-4

SLU	OPP
9/1	3 Creighton (H) 2
9/3	2 Northern Illinois (A) 0
9/6	1 N.C. State (H)(ot) 1
9/7	1 Penn State (H) 2
9/13	0 California (N) 2
9/14	0 San Francisco (A)(ot) 0
9/20	0 North Texas St. (N) 1
9/21	0 S. Methodist (H) 2
9/27	2 Indiana (H) 1
10/1	0 Western Illinois (A) 1
10/5	2 Michigan State (H) 0
10/11	4 Marquette (A) 1
10/13	1 Wisconsin (A) 0
10/16	4 Quincy (H) 0
10/19	3 Eastern Illinois (H) 2
10/25	4 SIU Edwardsville (N) 1
10/29	4 Mo.-St. Louis (H) 2
11/1	0 Boston College (A) 1
11/3	2 Connecticut (A)(ot) 3
11/6	2 Illinois State (H)(ot) 2
11/10	1 Evansville (A)(ot) 1
36	25

### 1986 13-5-2

SLU	OPP
8/31	2 Washington (Mo.) (A) 0
9/6	2 Clemson (H) 2
9/9	2 Mo.-St. Louis (A) 0
9/13	1 Fresno State (N) 2
9/14	1 San Francisco (N) 0
9/19	1 Evansville (H) 2
9/20	2 South Carolina (H) 3
9/26	1 Michigan State (A) 1
9/28	3 Indiana (A) 1
10/4	3 Florida Int'l. (N) 0
10/5	2 Old Dominion (N) 1
10/8	2 Illinois State (H) 1
10/11	2 Northern Illinois (H) 1
10/14	2 Quincy (A) 0
10/18	3 Eastern Illinois (A) 0
10/24	1 North Texas State (A) 0
10/26	0 S. Methodist (A) 2
11/1	1 SIU Edwardsville (A) 0
11/8	3 W. Illinois (H) 2
11/16	2 California (H) 0
11/23	1 S. Methodist (A) 3
36	22

### 1987 12-6-5

SLU	OPP
9/1	3 Washington (Mo.) (A) 3
9/5	2 Wisconsin (N) 0
9/6	1 UW-Milwaukee (A) 0
9/11	3 Loyola (Ill.) (H) 1
9/17	2 Quincy (H) 4
9/20	1 Evansville (A) 0
9/25	3 Air Force (H) 1
9/27	1 Indiana (H) 3
10/2	4 Penn State (A) 1
10/4	1 Clemson (N) 5
10/8	1 Illinois State (A) 2
10/10	2 Northern Illinois(H) 1
10/12	2 Mo.-St. Louis (H) 1
10/16	1 San Francisco (N) 1

10/18	1 Virginia (N) 1
10/21	7 Bradley (H) 0
10/23	1 North Texas State (H) 1
10/25	1 S. Methodist (H) 2
10/30	2 SIU Edwardsville (H) 0
11/4	1 Eastern Illinois (H) 0
11/7	4 Dayton (N) 0
11/8	1 Evansville (N) 1
11/15	1 San Diego State (H) 2
46	30

### 1988 18-4-2

SLU	OPP
9/2	2 Washington (Mo.) (A) 0
9/4	1 Mo.-St. Louis (A) 0
9/7	2 Ohio State (H) 0
9/10	2 Evansville (H) 2
9/13	1 Quincy (A)(ot) 0
9/16	2 Air Force (A)(ot) 3
9/18	4 New Mexico (N) 0
9/23	4 Xavier (Ohio) (A) 0
9/25	0 Indiana (A) 3
9/28	4 SW Missouri (H) 0
10/2	2 Loyola (Ill.) (H) 0
10/5	1 Illinois State (H) 0
10/8	5 SIU Edwardsville (A) 0
10/11	2 Akron (H) 0
10/14	4 Princeton (N) 1
10/16	2 Rutgers (A) 0
10/19	11 Bradley (H) 0
10/21	2 North Texas (A) 1
10/23	0 S. Methodist (A) 0
10/27	4 E. Illinois (A)(ot) 3
10/30	5 Western Illinois (H) 0
11/5	2 Dayton (H) 0
11/6	0 Notre Dame (H) 2
11/20	1 S. Methodist (H)(ot) 2
63	17

### 1989 18-5-2 (MCC 6-2-0)

SLU	OPP
9/2	2 Notre Dame (A) 0
9/3	1 Indiana (A) 1
9/6	1 Washington (Mo.)(A) 0
9/8	3 Mo.-St. Louis (H) 0
9/10	0 Evansville (A) 3
9/13	3 W. Illinois (A)(ot) 1
9/15	4 Xavier (A) 0
9/17	1 Dayton (A) 0
9/20	3 Quincy (H) 2
9/22	4 Xavier (H) 0
9/24	3 Evansville (H) 0
9/29	3 SIU Ed'ville (H)(ot) 1
10/1	2 Northern Illinois (H) 0
10/4	1 Illinois State (A) 0
10/7	3 Dayton (H) 0
10/13	1 Loyola (Md.) (A) 3
10/15	0 George Mason (A) 0
10/20	3 North Texas (H) 2
10/22	0 S. Methodist (H) 1
10/26	4 Eastern Illinois (H) 1
10/29	1 Akron (A) 0
11/2	3 Detroit (H) 1
11/3	2 Notre Dame (H) 1
11/5	1 Evansville (H) 4
11/12	1 Fresno State (H) 2
50	23

# ALL-TIME RESULTS

1990 18-5-2 (MCC 6-2-0)		
SLU		OPP
9/1	0	Evansville (H) 1
9/4	1	Loyola (Ill.) (H) 0
9/7	1	Virginia (N) 1
9/8	3	San Francisco (N) 2
9/12	3	Western Illinois (H) 0
9/14	3	Notre Dame (A) 2
9/16	5	Detroit (A) 1
9/21	1	Marquette (H) 0
9/23	1	Indiana (H) 2
9/29	3	SIU Edwardsville (A) 2
10/3	2	Illinois State (H) 1
10/5	2	Xavier (OH) (A) 0
10/7	3	Dayton (A) 0
10/12	1	Howard (H) 0
10/13	1	Loyola (Md.) (H) 0
10/16	1	Butler (H) 2
10/19	3	North Texas (A) 2
10/21	1	S. Methodist (A) 1
10/26	3	Northern Illinois (H) 0
10/26	3	Quincy (A) 0
10/29	1	Notre Dame (H) 0
11/1	2	Marquette (H) 0
11/2	0	Evansville (H) 1
11/11	1	George Mason (H) 0
11/17	<u>1</u>	Indiana (A) <u>2</u>
	46	20

1991 NCAA Semi-finalist GMW Champions 20-2-2 (5-0-0)		
SLU		OPP
9/6	2	Penn State (N) 1
9/8	1	Stanford (N)(ot) 1
9/11	3	Tulsa (H) 0
9/13	2	Notre Dame (H) 0
9/15	2	Evansville (A) 0
9/20	3	DePaul (A) 1
9/22	1	Indiana (A) 2
9/27	3	SIU Edwardsville (H) 2
10/2	2	Illinois State (A) 1
10/5	0	San Diego St. (H)(ot) 0
10/6	3	Quincy (H) 0
10/12	1	UAB(N) 0
10/13	2	Marquette (A)(ot) 1
10/18	3	North Texas (H) 0
10/20	2	S. Methodist (H) 0
10/23	6	Memphis State (H) 2
10/26	2	Northern Illinois (A) 2
10/30	1	Eastern Illinois (A) 0
11/3	3	Cincinnati (H) 1
11/9	5	Marquette (H) 0
11/10	5	Cincinnati (H) 0
11/23	4	North Carolina (H) 0
11/30	3	N.C. State (H) 0
12/6	<u>2</u>	Virginia (N)(ot) <u>3</u>
	62	14

1992 GMW Champions 18-4-1 (4-0-1)		
SLU		OPP
9/5	2	South Florida (A) 0
9/7	4	Florida Int'l. (A) 3
9/10	3	Northern Illinois (H) 0
9/13	1	South Carolina (A) 3
9/18	2	Eastern Illinois (H) 1
9/20	2	Indiana (H) 0
9/26	1	SIU Ed'ville (A)(ot) 0
10/2	1	Creighton (H)(ot) 2
10/3	3	Boston College (H) 0
10/7	3	Evansville (H)(ot) 1
10/10	1	Memphis St. (A)(ot) 1
10/11	3	UAB (A) 0
10/14	4	Quincy (A)(ot) 2
10/16	4	DePaul (H) 0
10/17	3	Marquette (H) 0
10/23	3	S. Methodist (A) 1
10/25	1	North Texas (A) 4
10/30	2	Illinois State (H)(ot) 0
11/1	1	Cincinnati (A) 0
11/7	7	Cincinnati (H) 1
11/8	4	Memphis State (H) 1
11/15	2	Bowling Green (H) 1
11/22	<u>3</u>	Duke (A) <u>4</u>
	60	25

1993 GMW Champions 16-5-1 (6-0-0)		
SLU		OPP
9/4	4	Loyola (H) 1
9/6	9	Dayton (H) 0
9/11	0	Creighton (A) 1
9/17	4	Memphis (H) 0
9/19	0	Indiana (A) 3
9/24	3	SIU Edwardsville (H) 0
9/26	3	Quincy (H) 1
10/1	2	San Francisco (N)(ot) 3
10/3	3	Stanford (A) 0
10/5	1	Evansville (A) 0
10/10	5	UAB (H) 1
10/12	5	Tulsa (H) 3
10/15	3	DePaul (A) 0
10/17	3	Marquette (A) 0
10/22	2	S. Methodist (A) 0
10/24	4	North Texas (H) 0
10/29	1	Illinois State (A) 0
10/31	6	Cincinnati (H) 0
11/6	5	Dayton (N) 1
11/7	0	Memphis St. (A)(ot) 1
11/14	0	Portland (A)(ot) 0
11/20	<u>1</u>	San Francisco (A) <u>2</u>
	64	17

1994 16-6-0 (GMW 5-1-0)		
SLU		OPP
9/3	2	N. Carolina (N)(ot) 1
9/4	1	South Carolina (N) 0
9/7	8	DePaul (H) 3
9/10	1	Marquette (H) 0
9/16	2	Charlotte (H) 1
9/18	0	Indiana (H) 4
9/23	3	Dayton (A)(ot) 1
9/25	6	Cincinnati (A) 0
10/4	3	Tulsa (A) 2
10/7	3	Memphis (A) 2
10/9	0	UAB (A) 4
10/12	1	Furman (N) 0
10/15	4	SIU Edwardsville (A) 1
10/17	2	Quincy (A) 0
10/21	4	UALR (N) 2
10/23	2	S. Methodist (A) 4
10/29	2	Creighton (H)(ot) 1
11/2	2	Illinois State (H) 1
11/5	0	Evansville (H) 2
11/10	2	Dayton (N) 1
11/11	0	Marquette (N) 1
11/20	<u>1</u>	Creighton (N) <u>2</u>
	50	33

1995 Conference USA Champions 15-6-1 (6-1-1)		
SLU		OPP
8/24	1	Virginia (H)-exh. 1
8/26	1	Notre Dame (H)-exh. 1
9/2	0	Boston U. (N) 2
9/3	5	N.C. State (N) 1
9/8	4	SIU Edwardsville (H) 0
9/10	4	Cincinnati (H) 1
9/14	4	Charlotte (A) 3
9/17	0	Indiana (A) 1
9/22	6	DePaul (A) 1
9/27	4	Eastern Illinois (H) 0
9/30	4	South Florida (H) 0
10/3	3	Evansville (A) 1
10/6	4	Memphis (H) 0
10/8	5	Quincy (H) 1
10/14	3	Davidson (N) 1
10/15	3	South Carolina (A) 4
10/20	0	UAB (H)(ot) 0
10/22	1	S. Methodist (H) 2
10/28	2	Louisville (A) 0
11/3	0	Marquette (A) 1
11/9	1	Memphis (N) 0
11/10	3	South Florida (N) 2
11/12	2	Charlotte (N) 0
11/19	<u>1</u>	S. Methodist (A)(ot) <u>4</u>
	59	24

# ALL-TIME RESULTS

1996 5-10-3 (C-USA 5-2-1)			
	SLU		OPP
8/31	5	Marquette (H)	0
9/6	0	American (N)	2
9/8	1	Virginia (A) (ot)	2
9/14	1	Creighton (N)	3
9/15	1	S. Methodist (A)	4
9/21	1	South Florida (A)	3
9/25	0	Cincinnati (A) (ot)	0
9/29	4	Ohio St. (H) (ot)	4
10/2	3	DePaul (H)	0
10/5	1	Loyola (Ill.) (H)	2
10/11	4	Louisville (H)	1
10/13	1	Memphis (A)	0
10/18	1	UAB (A)	2
10/20	3	Charlotte (H)	2
10/25	0	CSU-Fullerton (N)(ot)	0
10/27	2	UCLA (A)	3
11/3	1	Evansville (H)	3
11/12	0	Memphis (H)	1
	29		32



Kevin Kalish was an All-American defender in 1998.



**Bob Warming**  
60-17-10  
(4 Seasons)  
4 NCAA Appearances  
1997 Final Four

1997	
NCAA Semi-Finalist	
Conference USA Champions	
16-5-4 (5-2-1)	

	SLU		OPP
8/29	1	Creighton (H) (ot)	1
8/31	0	Creighton (A)	1
9/5	2	Clemson (A)	1
9/6	2	Rutgers (A) (ot)	1
9/12	1	SMS(H) (ot)	1
9/14	0	UCLA (H)	2
9/19	3	UMKC (H)	0
9/21	3	South Florida (H)	1
9/26	2	Memphis (A)(ot)	1
9/28	1	Ohio State (A)	0
10/3	0	Louisville (A)	1
10/5	1	Cincinnati (A)(ot)	1
10/10	1	Charlotte (A)	2
10/12	3	UAB (A)	0
10/19	1	Evansville (A)	0
10/24	2	Marquette (H)	1
10/26	2	DePaul (H) (ot)	1
10/31	1	Butler (H)	0
11/8	1	Louisville (H)	0
11/14	2	Marquette (N)	0
11/16	3	South Florida (A) (ot)	1
11/23	2	Southwest Mo. St. (H)	0
11/30	1	Creighton (H)	0
12/7	0	S. Methodist (A) (ot)	0
12/12	1	Virginia (A)	3
	36		19

1998	
Conference USA Co-Champions	
14-5-1 (6-1-1)	

	SLU		OPP
9/1	3	Tulsa (H)	0
9/4	0	Creighton (A)	1
9/6	2	Drake (N)	1
9/9	2	SMS (H)	1
9/11	0	Hartford (N)	1
9/13	2	California (N)	0
9/18	3	Evansville (H)	2
9/20	3	SMU (H)	0
9/25	2	Marquette (A) (ot)	1
9/27	3	DePaul (A) (ot)	2
10/2	1	Louisville (H) (ot)	0
10/4	1	Cincinnati (A) (ot)	1
10/9	1	Charlotte (H)	0
10/11	2	UAB (H)	0
10/16	2	Memphis (H)	0

10/23	1	South Florida (A) (ot)	2
10/26	3	Butler (A)	0
10/30	5	UMKC (H)	2
11/7	0	Memphis (H) (ot)	1
11/22	1	Creighton (H) (ot)	4
	37		19

1999	
Conference USA Co-Champions	
17-4-2 (7-1-0)	

	SLU		OPP
8/21	3	Indiana (H)-exh.	2
9/1	4	Westminster (H)	0
9/3	2	Butler (N)	0
9/5	1	Indiana (A) (ot)	0
9/9	1	SMS (H) (ot)	1
9/12	0	Creighton (H)	1
9/17	1	SMU (A) (ot)	0
9/18	3	Charleston (N)	0
9/25	4	Memphis (H)	0
9/30	5	Tulsa (H)	0
10/3	1	Cincinnati (A)	0
10/6	2	DePaul (A)	1
10/9	3	South Florida (H)	2
10/13	2	UMKC (H) (ot)	1
10/17	2	Charlotte (A)	1
10/24	2	UAB (A)	3
10/27	4	Marquette (H) (ot)	3
10/30	4	Louisville (H)	1
11/6	1	California (A) (ot)	1
11/7	2	Stanford (N)	0
11/12	3	Cincinnati (N) (4ot)	2
11/14	0	UAB (A)	4
11/21	3	Ill.-Chicago (H)	2
11/28	0	UCLA (H)	2
	50		25

2000	
Conference USA Champions	
13-3-3 (6-1-1)	

	SLU		OPP
9/1	9	Vanderbilt (H)	0
9/8	3	California (H)	0
9/10	2	SMU (H)	3
9/15	1	James Madison (N)	2
9/17	3	Cornell (N)	1
9/23	1	SMS (H) (ot)	1
9/27	4	DePaul (H)	0
9/30	1	UAB (H)	0
10/6	2	Rutgers (A) (ot)	1
10/8	1	St. John's (N) (ot)	0
10/14	3	Louisville (A)	1
10/18	0	Cincinnati (H) (ot)	0
10/21	0	Charlotte (H)	2
10/24	1	Marquette (A)	0
10/28	1	Memphis (A) (ot)	0
11/4	4	South Florida (A)	3
11/10	3	Memphis (H)	2
11/12	2	UAB (H)	1
11/18	0	Kentucky (H) (ot)	0
	41		17

# BILLIKEN SOCCER ALUMNI

## NAME SEASONS

• **A** •  
 Adams, Jacob 1996-97  
 Alagic, Vedad 1997-2000  
 Amann, Harry 1968  
 Apodaca, Joe 1982  
 Apodaca, Rick 1975-77  
 Aubuchon, Don 1974-77

• **B** •  
 Baker, Gene 1964-65  
 Baker, Pat 1981-84  
 Balassi, Gerry 1960-62  
 Balmer, John 1964  
 Barry, Tom 1959-61  
 Battelle, Shane 1991-93  
 Bayer, Bill 1963  
 Beaudoin, Paul 1963  
 Bee, Steve 1989-90  
 Behnen, Dave 1963  
 Benton, Brian 1997-98  
 Block, Gene 1959  
 Bokern, Jim 1970-73  
 Bokern, Nick 1996-99  
 Bokern, Tom 1966-68  
 Boyd, Fred 1961-64  
 Bozdeck, Dave 1984-87  
 Brassil, Tim 1967  
 Brcic, David 1976  
 Brcic, Gary 1974-76  
 Brennan, Don 1964-66  
 Bright, Richie 1987-90  
 Brown, Bill 1963-64  
 Brown, Mike 1996  
 Burdge, Eric 1989-91  
 Butler, John 1961-63  
 Byrne, Mike 1991-93  
 Byron, Jim 1961-63

• **C** •  
 Carroll, Derek 1993-94  
 Carroll, Mark 1986  
 Cashel, Tim 1987  
 Ceresia, Don 1962-64  
 Cherveney, Eric 1992-95  
 Clarke, Joe 1972-75  
 Collico, Pete 1974-77  
 Conley, Jim 1966-67  
 Conway, Tim 1972-75  
 Copple, Don 1968-70  
 Corbett, Craig 1994-97  
 Costello, Ken 1995-98  
 Counce, Dan 1970-73  
 Cronin, Larry 1961-63

• **D** •  
 Dames, Rory 1991-94  
 DaPra, Dominic 1998-99  
 Davis, Jeff 1990-92  
 DeGrand, Ryan 1990-93  
 Delgado, Jose 1986-89  
 Demling, Mark 1970-73  
 De Sa Queen, Doug 1971  
 Diekemper, Jerry 1966  
 DiMaria, Jeff 1997-99  
 Dix, Tom 1961  
 Domino, Tom 1995  
 Donley, Bill 1967-68  
 Donnelly, Mike 1986-87  
 Doran, Dan 1978-81  
 Doran, Daryl 1981  
 Doran, Don 1975-76  
 Dorrian, John 1983-84  
 Drake, Vince 1965-67  
 Draude, Jim 1968-71  
 Droege, Don 1973-76  
 Dueker, John 1959  
 Duggan, Pat 1964



Shane Battelle / Columbus Crew

• **E** •  
 Eilerman, John 1969-72  
 Eise, Steve 1985-88  
 Elinger, Ed 1982  
 Endler, George\* 1959  
 Endler, Robert\* 1959  
 Ernst, Bob 1962-64  
 Evans, Jim 1968-70

• **F** •  
 Fernandez, David 1981-84  
 Filla, Joe 1978-81  
 Filla, Mark 1995-96  
 Finnegan, Mike 1970-71  
 Fischer, Wayne 1967-68  
 Fletcher, Frank 1965  
 Flynn, Dan 1975-77  
 Flynn, Tim 1968-71  
 Frank, Steve 1967-69  
 Frederickson, Mark 1978-81  
 Fuchs, John 1959  
 Fuchs, Steve 1983-86

• **G** •  
 Galmiche, Jack 1967-69  
 Garcia, Bob 1964-66  
 Garnier, Paul 1962  
 Geerling, Dave 1985  
 Geimer, Gene 1967-69  
 Gentile, Carl 1963-65  
 Genovese, Tim 1985  
 Gilsinn, Jack 1963-65  
 Goforth, Mike 1986-87  
 Goegel, Mark 1969-70  
 Goldschmidt, Don 1974-77  
 Gonzalez, Andy 1979-82  
 Gonzalez, Bill 1969-70  
 Grasso, Sal 1965  
 Griffard, Pat 1959-61  
 Groark, Kevin 1985  
 Guarino, Gary 1973-77  
 Guttman, Jim 1970-73  
 Guzman, Chris 1991-95

## NAME SEASONS

• **H** •  
 Hadican, Brian 1997-2000  
 Hadican, Denny 1970-73  
 Hamm, Joe 1969-72  
 Handlan, Kevin 1973-76  
 Hankey, Joe 1998-99  
 Hansmann, Brad 1994-95, 1997-98  
 Harmon, Dale 1971-72  
 Hayes, John 1978-81  
 Hayes, Tom 1982-85  
 Hennessey, Dan 1983  
 Hennessey, Joe 1961-63  
 Hennessey, Tom 1960-61, 65  
 Herleth, Bob 1971-73  
 Hoerdeman, Bob 1967  
 Hoffmann, Tim 1972-75  
 Hofelder, Dan 1992  
 Horton, Jeff 1986-89  
 Huber, Don 1975-78  
 Huber, Jason 1989-92  
 Hudson, Bruce 1971-74  
 Hulcer, Larry 1975-78  
 Hunsicker, Steve 1982-85

• **I** •  
 Imig, Gary 1992-93

• **J** •  
 Johnson, Johnny 1988-89  
 Johnson, Ron 1965-66  
 Johnston, Kevin 1987-90

• **K** •  
 Kalish, Kevin 1997-98  
 Kammer, Jerry 1979  
 Kaschner, Rudy 1971  
 Kauffman, Bob 1959  
 Kavanaugh, Jim 1981-85  
 Kelly, Dan 1995-96  
 Kelly, Kevin 1963-64  
 Kenny, Chris 1982-83  
 Keough, Ty 1975-78  
 Kerber, Bob 1964-66  
 Kickham, Steve 1986-89  
 Kiely, Jay 1974-77  
 Kinealy, Jack 1964-66  
 Klein, Al 1960-61  
 Klein, John 1959-60  
 Klein, John 1985-86  
 Klein, Tom 1961-62  
 Klipfel, Casey 1994-97  
 Knobbe, Jerry\* 1959  
 Knox, Terry 1962-64  
 Knox, Tim 1962-64  
 Koenig, Joe 1983-86  
 Kruckmeyer, Bob 1978-80  
 Kuenzel, Dave 1977-78  
 Kuntz, Steve 1988-91  
 Kustura, Dan 1979-80

• **L** •  
 L'Hommedieu, Ed 1990-93  
 Lacey, Lohn 1964  
 Ladi, Steve 1980-82  
 Layton, Tom 1963  
 Lawler, Shane 1994  
 Leahy, Dan 1962-64  
 Leahy, Pat 1969-72  
 Ledbetter, Rich 1993  
 Leeker, Jim 1966-69  
 Leeker, Joe 1968-69  
 LeGrand, Jeff 1977-80  
 Leonard, Tim 1993-94, 96-97  
 Lipski, Ed 1964  
 Logush, Tim 1971-74  
 Luzecky, Jim 1980-83  
 Lynn, John 1988-91

# BILLIKEN SOCCER ALUMNI

## NAME SEASONS

• M •	
Madeiras, Andre	1993-95
MacDonald, Scott	1979-80
Malone, Bob	1959-61
Malone, Terry	1959
Malle, Tom	1976-79
Mann, Raymond	1962-63
Manna, Lee	1959
Mannion, Dan	1964
Mataya, Tom	1962-64
Matteson, Bob	1970-73
Maurer, Steve	1982-85
McAuliffe, Tim	1964-66
McAvin, Matt	1993-94
McBride, Brian	1990-93
McBride, Pat	1963-65
McCarthy, Joe	1970
McDermott, Bill	1967-69
McDoniel, Scott	1989-92
McDonnell, Tom	1960-63
McKeon, Bill	1979-82
McKeon, Matt	1992-95
McPartland, Shannon	1994-96
Meagher, Dan	1982-83
Meek, John	1988-89
Meinhardt, Dan	1985-86
Melchior, Brad	1966-67
Menendez, Mike	1981-84
Merlo, Dan	1988-91
Merubia, George	1967
Michalski, John	1959-61
Michler, Tom	1980-81
Mika, Jeff	1988-92
Mims, Jason	1997-99
Miramonti, Bob	1965-66
Miramonti, Tim	1984-87
Molski, Todd	1991
Moore, Jay	1964-66
Moore, Jeremy	1992-94
Moore, Mike	1961-63
Moriarty, Mike	1995-98
Moriarty, Pat	1995-98
Mueller, Irvin	1967
Mueller, William	1959-61
Murphy, Jim	1964-66
Murray, Tim	1994
• N •	
Nagy, Paul	1997-2000
Neusel, Ed	1968-70
Neusel, Tom	1973-75
Newsham, John	1978-80
Niehoff, Jim	1968-69
Nikodem, Steve	1984
• O •	
O'Connell, Kevin	1964
O'Leary, Bob	1971-72
Olwig, Joe	1979-82
O'Mara, Mike	1980-81
Oswald, Ed	1960-62
Otis, Steve	1974-75
O'Toole, Tim	1968-69
• P •	
Pelizzaro, Matt	1978
Pelizzaro, Mike	1985-88
Pelizzaro, Tom	1972-75
Pelizzaro, Tony	1987-90
Pinon, Ed	1991-92
Pisani, John	1967-69
Pisoni, Bob	1959
Poston, Mike	1967
Prost, Mike	1983-84



Dan Flynn

• Q •	
Quinn, Mike *	
Quigley, Kevin	1994-97
• R •	
Range, Don	1959-60
Reis, Greg	1985-88
Renaud, Tom *	1972-75
Rensing, Gary	1967-69
Reyes, Miguel	1990
Rich, Tom	1966-68
Richmond, Tom	1959-60
Rick, Jim	1962-63
Rick, Steve	1965-66
Riggs, Brian	1993-96
Robbin, Dave	1961
Roeslein, John	1973-74
Roseman, Jeff	1995-96, 98
Rozanski, Stan	1967-68
Rudroff, Bruce	1973-76
Rupp, Roger	1961-63
Rupp, Tanner	1994-97
• S •	
Sanders, Jim	1975-78
Santel, Chris	1991-94
Santel, Mark	1986-90
Schaller, Mike	1993-96
Schlitt, Dave	1965-67
Schell, Mark	1976-79
Schoenbeck, Tom	1964
Schwalbe, Jerry	1962-64
Schuler, Frank	1962-64
Schulte, Matt	1983-84
Schulze, Dan	1995-98
Schultz, Pete	1996
Seerey, Denny	1978-81
Seerey, Mike	1969-72
Shanahan, Michael	1960
Singer, Ben	1995-96
Sirinek, David	1963-64
Small, Fred	1992
Smith, Dale	1979-80

## NAME SEASONS

Sorber, Mike	1989-92
Spurlin, Mike	1992
Stahl, Tom	1965-67
Steck, Al	1970-73
Stockman, Greg	1974-77
Stooksberry, Lee	1992-96
Strange, Tim	1985-89
Strunk, Tom	1985-88
Stumpf, Gene	1981-83
Stumpf, Mike	1983-87
Sullivan, Steve	1977-79-80
• T •	
Tangaro, Tom	1978-80
Tedoni, Tim	1997-99
Thomas, Jacob	1995
Tieber, Tony	1960-61
Tietjens, Jim	1978-79
Tocco, Tony	1965-66
Toczykowski, Al	1961-62
Torretti, Tom	1970-73
Toural, Dave	1988-89
Trigg, Bob	1960-62
Trost, Al	1968-70
Trost, Tim	1996
Trost, Tom	1959
• U •	
Usina, Flynt	1983
• V •	
Vallero, Rob	1974-76
Vanderzalm, Adrian	1963
Vargas, Jamie	1972
Vierling, Steve	1967
Vieth, Bill	1961-63
Vieth, Bill Jr.	1982-85
Vieth, Bob	1965
Vorst, Scott	1977
Voss, Corey	1987-90
• W •	
Walsh, Tom	1966
Walters, Dan	1984-87
Warren, Larry	1966-68
Weaver, Dan	1980-81
Werkmeister, Ryan	1996-98
Werner, Denny	1970-73
Werner, Wally	1965-67
Werley, Richard	1960
Westhus, Joe	1964-66
Wiley, Jim	1961
Williams, David	1996-99
Wilson, Brad	1993
Winecoff, John	1960
Winkelmann, Paul	1982-85
Wozniak, J.J.	1993-94
• Z •	
Zaber, Jay	1989-92
Zoeller, Chuck	1967-69
Zorumski, Chuck	1972-73

\* Deceased

### MISSING SOMEONE?

*If you or someone you know played soccer at the University but isn't listed above, please send the name and season(s) played to:*

Saint Louis University  
Billiken Media Relations  
221 N. Grand Blvd., DB 38  
St. Louis, MO 63103



## PAT LEAHY SCHOLARSHIP

**T**he Pat Leahy Scholarship was established in 1992. Leahy is a native St. Louisan and former National Football League star who was a valued member of three Billiken NCAA national championship teams during his playing career from 1969-72.

The proceeds from Leahy's annual golf tournament benefit both the men's and women's soccer programs at Saint Louis as well as the Pat Leahy Soccer Scholarship Endowment Fund. The funds are used primarily to cover fifth-year scholarships for Billiken soccer players.

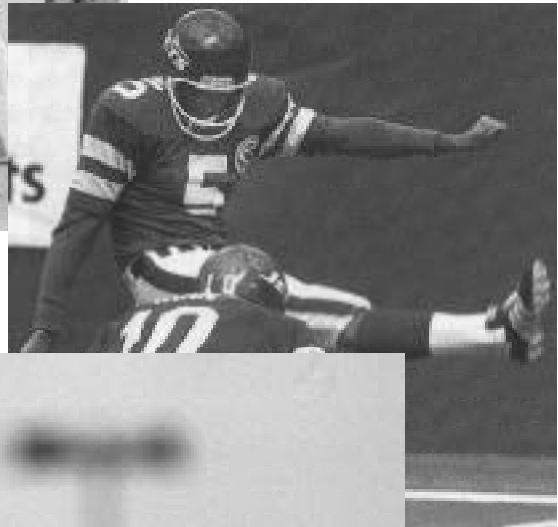
Upon his retirement from pro football on July 6, 1992, Leahy left as the third-leading scorer on the NFL's all-time list with 1,470 points behind only Hall of Famers George Blanda and Jan Stenerud.

The highlight of Leahy's NFL career was when he was voted the Jets' MVP following the 1990 season. He scored 1,011 points that year and finished as the top scorer for the 11

A plaque is presented to the Bauman-Eberhart the University career award and its re



Dan Leahy, Pat Leahy and Billiken Club Chairman J. Kim Tucci at 1992 ceremonies to introduce the scholarship.



r 18 years.

The Billikens celebrate another goal.



# S E R I E S R E C O R D S

OPPONENT	W-L-T	LAST	OUTCOME	OPPONENT	W-L-T	LAST	OUTCOME
Air Force Academy	11-1-0	1988	AFA 3-2, OT (A)	Michigan State	9-2-6	1986	Tie 1-1 (A)
Akron	7-1-0	1989	SLU 1-0 (H)	UMKC	3-0-0	1999	SLU 2-1 OT (H)
Alabama A&M	2-1-0	1983	A&M 4-0 (A)	UM-St. Louis	16-2-1	1989	SLU 3-0 (H)
American	1-1-0	1996	AU 2-0 (N)	Murray State	1-0-0	1971	SLU 11-1 (H)
Arkansas-Little Rock	1-0-0	1994	SLU 5-2 (N)	National Uruguay	0-1-0	1973	NU 2-1 (H)
Avila	1-0-1	1982	SLU 3-2 (H)	Naval Academy	3-1-0	1967	SLU 1-0 (N)
Ball State	1-0-0	1963	SLU 12-0 (H)	Navy Pier	5-0-0	1964	SLU 10-0 (H)
Boston College	2-1-0	1992	SLU 3-0 (H)	New Mexico	1-0-0	1988	SLU 4-0 (N)
Boston University	0-1-0	1995	BU 2-0 (N)	<b>North Carolina</b>	2-0-0	1994	SLU 2-1 OT (N)
Bowling Green State	3-0-0	1992	SLU 2-1 (H)	North Carolina State	2-0-1	1995	SLU 5-1 (N)
Bradley	2-0-0	1988	SLU 11-0 (H)	Northern Illinois	9-0-1	1992	SLU 3-0 (H)
Bridgeport	1-0-0	1959	SLU 5-3 (N)	North Texas	8-3-3	1993	SLU 4-0 (H)
British Columbia	3-0-0	1975	SLU 3-1 (H)	Northwestern	2-0-0	1966	SLU 6-0 (H)
Brown	4-0-0	1981	SLU 4-0 (H)	Northeastern Louisiana	1-0-0	1983	SLU 3-2 (H)
Butler	3-1-0	1999	SLU 2-0 (N)	Notre Dame	9-2-1	1991	SLU 2-0 (H)
California	5-1-1	2000	SLU 3-0 (H)	Ohio University	3-0-0	1972	SLU 3-1 (A)
Cal State-Fullerton	0-0-1	1996	Tie 0-0 (N)	Ohio State	2-0-1	1997	SLU 1-0 (A)
<b>Charlotte</b>	6-2-0	2000	CHA 2-0 (H)	Old Dominion	1-0-0	1986	SLU 2-1 (N)
Chicago	5-0-0	1963	SLU 16-0 (A)	Penn State	2-2-0	1991	SLU 2-1 (N)
<b>Cincinnati</b>	11-0-4	2000	Tie 0-0 OT (H)	Pennsylvania	1-0-0	1973	SLU 2-0 (N)
City College of New York	1-0-0	1959	SLU 6-2 (N)	Philadelphia Textile	0-1-1	1982	Tie 0-0 OT (H)
Clemson	2-4-1	1997	SLU 2-1 (N)	Pittsburgh	2-0-0	1961	SLU 4-0 (H)
Cleveland State	11-3-1	1982	CSU 2-1 (H)	Portland	0-0-1	1993	Tie 0-0 OT (A)
College of Charleston	1-0-0	1999	SLU 3-0 (N)	Princeton	1-0-0	1988	SLU 4-1 (N)
Colorado College	3-0-0	1968	SLU 4-0 (A)	Purdue	2-0-0	1960	SLU 12-0 (H)
Connecticut	4-3-0	1985	UC 3-2 OT (A)	Quincy	24-5-3	1995	SLU 5-1 (H)
Cornell	1-0-0	2000	SLU 3-1 (N)	Rider	1-0-0	1970	SLU 6-0 (A)
Covenant	1-0-0	1978	SLU 8-1 (A)	Rockhurst	14-1-1	1983	SLU 1-0 (A)
Creighton	5-8-1	1999	CU 1-0 (H)	Rollins	8-1-1	1983	SLU 5-1 (A)
Davidson	1-0-0	1995	SLU 3-1 (N)	<b>Rutgers</b>	4-0-0	2000	SLU 2-1 OT (A)
Davis & Elkins	1-0-0	1973	SLU 2-0 (N)	St. John's	1-0-0	2000	SLU 1-0 (N)
Dayton	10-0-0	1994	SLU 2-1 (N)	St. Joseph's (Penn)	1-0-0	1970	SLU 4-0 (A)
<b>DePaul</b>	10-0-0	2000	SLU 4-0 (H)	SLCC-Florissant Valley	1-0-0	1969	SLU 2-0 (H)
Detroit	2-0-0	1990	SLU 5-1 (A)	San Diego State	0-1-1	1991	Tie 0-0 OT (H)
Drake	1-0-0	1998	SLU 2-1 (N)	San Francisco	11-8-3	1993	USF 2-1 (A)
Duke	0-1-0	1992	DU 3-4 (A)	San Jose State	6-0-0	1982	SLU 3-0 (A)
<b>East Carolina</b>	First Meeting			Santa Clara	2-1-0	1982	SCU 3-0 (A)
<b>Eastern Illinois</b>	12-4-0	1995	SLU 4-0 (H)	Seattle Pacific	0-0-1	1972	Tie 1-1 (A)
Eastern Michigan	1-0-0	1984	SLU 7-0 (H)	SIU-Carbondale	1-1-0	1968	SLU 6-0 (H)
Evansville	10-7-5	1998	SLU 3-2 (H)	SIU Edwardsville	25-9-1	1995	SLU 4-0 (H)
Fairleigh-Dickinson	2-2-0	1981	SLU 4-1 (A)	<b>Southern Methodist</b>	13-11-4	1999	SLU 1-0 OT (A)
<b>Florida International</b>	4-0-0	1992	SLU 4-3 (A)	South Carolina	1-3-1	1995	USC 4-3 (A)
Fresno State	0-2-0	1989	FSU 2-1 (H)	<b>South Florida</b>	21-4-1	2000	SLU 4-3 (A)
Furman	1-0-0	1994	SLU 1-0 (N)	<b>Southwest Missouri State</b>	3-0-3	2000	Tie 1-1 OT (H)
George Mason	1-0-1	1990	SLU 1-0 (H)	Springfield	3-0-0	1977	SLU 2-1 (A)
Georgia Tech	1-0-0	1964	SLU 7-0 (H)	Stanford	3-0-1	1999	SLU 2-0 (N)
Harris-Stowe State	4-0-0	1979	SLU 5-0 (H)	<b>Texas Christian</b>	1-0-0	1980	SLU 4-0 (A)
Hartford	0-1-0	1998	UH 1-0 (N)	Tulsa	6-0-0	1999	SLU 5-0 (H)
Hartwick	3-0-0	1980	SLU 3-1 (A)	<b>UAB</b>	7-4-1	2000	SLU 2-1 (H)
Harvard	1-0-0	1969	SLU 2-1 (A)	UCLA	7-4-0	1999	UCLA 2-0 (H)
Howard	2-2-0	1990	SLU 1-0 (H)	Vanderbilt	1-0-0	2000	SLU 9-0 (H)
Illinois	8-0-0	1966	SLU 4-1 (A)	Virginia	0-3-2	1996	UVa 3-1 (A)
Illinois-Chicago	6-0-1	1999	SLU 3-2 (H)	Washington	1-0-1	1972	Tie 0-0 (A)
Illinois State	9-1-1	1994	SLU 2-1 (H)	Washington (Mo.)	10-0-1	1989	SLU 1-0 (A)
Indiana	15-15-4	1999	SLU 1-0 OT (A)	West Berlin	1-0-0	1969	SLU 3-1 (H)
Indiana Tech	2-0-0	1962	SLU 14-0 (A)	West Chester State	1-1-0	1961	WCS 2-0 (N)
James Madison	1-1-0	2000	JMU 2-1 (N)	West Virginia	2-0-0	1973	SLU 4-1 (N)
Kentucky	0-0-1	2000	Tie 0-0 (H)	<b>Western Illinois</b>	12-1-0	1990	SLU 3-0 (H)
Long Island	1-0-0	1979	SLU 1-0 (A)	Westmont	1-0-0	1976	SLU 2-0 (A)
<b>Louisville</b>	6-1-0	2000	SLU 3-1 (A)	Westminster	1-0-0	1999	SLU 4-0 (H)
Loyola (Ill.)	5-1-0	1996	LU 2-1 (H)	Wheaton	8-1-0	1972	SLU 5-0 (H)
Loyola (Md.)	3-1-1	1990	SLU 1-0 (H)	UW-Green Bay	3-1-0	1976	SLU 2-0 (A)
MacMurray	6-0-0	1972	SLU 11-0 (H)	UW-Madison	3-0-1	1987	SLU 2-0 (N)
<b>Marquette</b>	17-2-0	2000	SLU 1-0 (A)	UW-Milwaukee	2-1-0	1987	SLU 1-0 (A)
Maryland	3-1-0	1968	UM 3-1 (A)	UW-Parkside	1-0-0	1974	SLU 3-1 (A)
<b>Memphis</b>	12-3-1	2000	SLU 3-2 (H)	Wooster	1-0-0	1971	SLU 8-0 (A)
Metropolitan State	1-0-0	1972	SLU 7-1 (H)	Xavier	4-0-0	1990	SLU 2-0 (A)
Miami (Fla.)	5-0-0	1974	SLU 8-1 (A)				
Michigan	1-0-0	1962	SLU 2-1 (H)				

**2001 Opponents in Bold**  
**Total (42 Seasons): 573-151-67 (.767)**

# SERIES RESULTS VS. 2001 OPPONENTS

## CHARLOTTE (6-2-0)

09/16/94	H	W	2-1	1-0-0
09/14/95	A	W	4-3	2-0-0
11/12/95	N	W	2-0	3-0-0
10/20/96	H	W	3-2	4-0-0
10/10/97	A	L	1-2	4-1-0
10/9/98	H	W	1-0	5-1-0
10/17/99	A	W	2-1	6-1-0
10/21/00	H	L	0-2	6-2-0

## CINCINNATI (11-0-4)

09/17/78	H	W	7-0	1-0-0
10/07/79	A	W	5-0	2-0-0
11/03/91	H	W	3-1	3-0-0
11/10/91	H	W	5-0	4-0-0
11/01/92	A	W	1-0	5-0-0
11/07/92	H	W	7-1	6-0-0
10/31/93	H	W	6-0	7-0-0
09/25/94	A	W	6-0	8-0-0
09/10/95	H	W	4-1	9-0-0
09/25/96	A	T	0-0 (ot)	9-0-1
10/05/97	A	T	1-1 (ot)	9-0-2
10/4/98	H	T	1-1 (ot)	9-0-3
10/3/99	A	W	1-0	10-0-3
11/12/99	N	W	3-2 (4ot)	11-0-3
10/18/00	H	T	0-0	11-0-4

## DEPAUL (10-0-0)

09/20/91	A	W	3-1	1-0-0
10/16/92	H	W	4-0	2-0-0
10/15/93	A	W	3-0	3-0-0
09/07/94	H	W	8-3	4-0-0
09/22/95	A	W	6-1	5-0-0
10/02/96	H	W	3-0	6-0-0
10/26/97	H	W	2-1 (ot)	7-0-0
9/27/98	A	W	3-2 (ot)	8-0-0
10/6/99	A	W	2-1	9-0-0
9/27/00	H	W	4-0	10-0-0

## EAST CAROLINA (First Meeting)

## EASTERN ILLINOIS (12-4-0)

10/13/70	H	W	5-0	1-0-0
10/05/71	A	W	2-0	2-0-0
09/10/78	H	W	2-0	3-0-0
11/22/81	A	L	0-1	3-1-0
10/15/82	A	L	0-1	3-2-0
11/20/83	H	L	0-3	3-3-0
11/20/83	A	W	2-1	4-3-0
10/21/84	A	L	0-1	4-4-0
10/19/85	H	W	3-2	5-4-0
10/18/86	A	W	3-0	6-4-0
11/04/87	H	W	1-0	7-4-0
10/27/88	A	W	4-3 (ot)	8-4-0
10/26/89	H	W	4-1	9-4-0
10/30/91	A	W	1-0	10-4-0
09/18/92	H	W	2-1	11-4-0
09/27/95	H	W	4-0	12-4-0

## FLORIDA INTERNATIONAL (4-0-0)

09/23/74	A	W	1-0	1-0-0
11/03/84	A	W	2-1	2-0-0
10/04/86	N	W	3-0	3-0-0
09/07/92	A	W	4-3	4-0-0

## LOUISVILLE (6-1-0)

10/28/95	A	W	2-0	1-0-0
10/11/96	H	W	4-1	2-0-0
10/03/97	A	L	0-1 (ot)	2-1-0
11/08/97	H	W	1-0	3-1-0
10/2/98	H	W	1-0 (ot)	4-1-0
10/30/99	H	W	4-1	5-1-0
10/14/00	A	W	3-1	6-1-0

## MARQUETTE (17-2-0)

10/11/64	A	W	10-1	1-0-0
11/13/65	H	W	10-0	2-0-0
09/01/80	A	W	2-1	3-0-0
10/11/85	A	W	4-1	4-0-0
09/21/90	H	W	1-0	5-0-0
11/02/90	H	W	2-0	6-0-0
10/13/91	A	W	2-1 (ot)	7-0-0
11/09/91	H	W	5-0	8-0-0
10/17/92	H	W	3-0	9-0-0
10/17/93	A	W	3-0	10-0-0
09/10/94	H	W	1-0	11-0-0
11/11/94	N	L	0-1	11-1-0
11/03/95	A	L	0-1	11-2-0
08/31/96	H	W	5-0	12-2-0
10/24/97	H	W	2-1	13-2-0
11/14/97	N	W	2-0	14-2-0
9/25/98	A	W	2-1 (ot)	15-2-0
10/27/99	H	W	4-3 (ot)	16-2-0
10/24/00	A	W	1-0	17-2-0

## MEMPHIS (12-3-1)

10/23/91	H	W	6-2	1-0-0
10/10/92	A	T	1-1 (ot)	1-0-1
11/08/92	H	W	4-1	2-0-1
09/17/93	H	W	4-0	3-0-1
11/07/93	A	L	0-1 (ot)	3-1-1
10/07/94	A	W	3-2	4-1-1
10/06/95	H	W	4-0	5-1-1
11/09/95	N	W	1-0	6-1-1
10/13/96	A	W	1-0	7-1-1
11/12/96	H	L	0-1	7-2-1
09/26/97	A	W	2-1 (ot)	8-2-1
10/16/98	H	W	2-0	9-2-1
11/7/98	H	L	0-1 (ot)	9-3-1
9/25/99	H	W	4-0	10-3-1
10/28/00	A	W	1-0	11-3-1
11/10/00	H	W	3-2	12-3-1

## NORTH CAROLINA (2-0-0)

11/23/91	H	W	4-0	1-0-0
09/03/94	N	W	2-1 (ot)	2-0-0

## RUTGERS (4-0-0)

11/23/61	H	W	6-1	1-0-0
10/16/88	A	W	2-0	2-0-0
9/06/97	N	W	2-1 (ot)	3-0-0
10/6/00	A	W	2-1 (ot)	4-0-0

## SOUTH FLORIDA (21-4-1)

10/11/67	A	W	1-0	1-0-0
10/11/67	H	L	0-1	1-1-0
10/05/68	H	W	3-1	2-1-0
11/08/69	A	W	3-1	3-1-0
10/24/70	A	W	5-1	4-1-0
10/23/71	A	W	4-1	5-1-0
10/28/72	H	W	1-0 (ot)	6-1-0
10/27/73	A	W	2-1	7-1-0
11/02/74	H	W	1-0	8-1-0
11/01/75	A	T	0-0 (ot)	8-1-1
10/31/76	H	W	2-0	9-1-1
10/29/77	A	W	2-1	10-1-1
10/31/78	H	W	2-1	11-1-1
10/27/79	A	W	4-2	12-1-1
10/17/80	H	W	2-1	13-1-1
10/24/81	A	W	2-1	14-1-1
11/09/83	A	L	0-1	14-2-1
09/05/92	A	W	2-0	15-2-1
09/30/95	H	W	4-0	16-2-1
11/10/95	N	W	3-2	17-2-1
09/21/96	A	L	1-3	17-3-1
09/21/97	H	W	3-1	18-3-1
11/16/97	A	W	3-1 (ot)	19-3-1

10/23/98	A	L	1-2 (ot)	19-4-1
10/9/99	H	W	3-2	20-4-1
11/4/00	A	W	4-3	21-4-1

## SOUTHERN METHODIST (13-12-4)

10/26/75	H	W	6-2	1-0-0
11/09/76	A	W	3-0	2-0-0
09/19/80	A	W	2-0	3-0-0
11/30/80	H	W	3-1	4-0-0
09/21/81	H	T	2-2 (ot)	4-0-1
09/12/82	A	L	1-2	4-1-1
09/25/83	H	W	3-1	5-1-1
11/16/83	A	W	2-1	6-1-1
09/23/84	A	W	1-0	7-1-1
11/23/84	H	W	5-3	8-1-1
09/21/85	H	L	0-2	8-2-1
10/26/86	A	L	0-2	8-3-1
11/23/86	A	L	1-3	8-4-1
10/25/87	H	L	1-2	8-5-1
10/23/88	A	T	0-0 (ot)	8-5-2
11/06/88	H	L	1-2 (ot)	8-6-2
10/22/89	H	L	0-1	8-7-2
10/21/90	A	T	1-1 (ot)	8-7-3
10/20/91	H	W	2-0	9-7-3
10/23/92	A	W	3-1	10-7-3
10/22/93	A	W	2-0	11-7-3
09/04/94	A	L	2-4	11-8-3
10/22/95	H	L	1-2	11-9-3
11/19/95	A	L	1-4 (ot)	11-10-3
09/15/96	A	L	1-4	11-11-3
12/07/97	A	T	0-0 (ot)	11-11-4
9/20/98	H	W	3-0	12-11-4
9/17/99	A	W	1-0 (ot)	13-11-4
9/10/00	H	L	2-3	13-12-4

## SOUTHWEST MISSOURI STATE (3-0-3)

09/28/88	H	W	4-0	1-0-0
09/12/97	H	T	1-1 (ot)	1-0-1
11/23/97	H	W	2-0	2-0-1
9/9/98	H	W	2-1	3-0-1
9/9/99	H	T	1-1 (ot)	3-0-2
9/23/00	H	T	1-1 (ot)	3-0-3

## TCU (1-0-0)

09/21/80	A	W	4-0	1-0-0
----------	---	---	-----	-------

## UAB (7-4-1)

10/12/91	N	W	1-0	1-0-0
10/11/92	A	W	3-0	2-0-0
10/10/93	H	W	5-1	3-0-0
10/09/94	A	L	0-4	3-1-0
10/20/95	H	T	0-0 (ot)	3-1-1
10/18/96	A	L	1-2	3-2-1
10/12/97	A	W	3-0	4-2-1
10/11/98	H	W	2-0	5-2-1
10/24/99	A	L	2-3 (ot)	5-3-1
11/14/99	A	L	0-4	5-4-1
9/30/00	H	W	1-0	6-4-1
11/12/00	H	W	2-1	7-4-1

## WESTERN ILLINOIS (11-1-0)

09/07/74	H	W	2-0	1-0-0
10/18/75	A	W	1-0	2-0-0
09/12/76	H	W	1-0	3-0-0
11/06/77	A	W	3-2	4-0-0
11/05/78	H	W	4-1	5-0-0
10/16/82	A	W	3-0	6-0-0
09/16/83	A	W	3-0	7-0-0
09/18/84	H	W	2-1	8-0-0
10/01/85	A	L	0-1	8-1-0
10/30/88	H	W	5-0	9-1-0
09/13/89	A	W	3-1 (ot)	10-1-0
09/12/90	H	W	3-0	11-1-0